

Karlsruhe Institute of Technology

RESEARCH – TEACHING – INNOVATION



Karlsruhe Institute of Technology (KIT)



One legal entity



The mission



Three core tasks



Research



Higher Education



Innovation

KIT – Selected Facts and Figures

25.196 Students

9.315 Employees

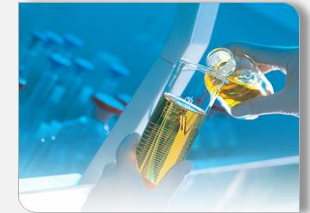
5.859 Education and research

355 Professors

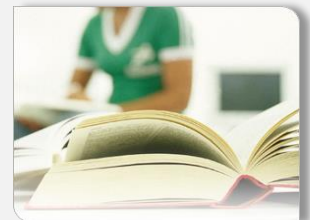
999 Foreign guest scientists

3.456 Infrastructure and services

471 Trainees

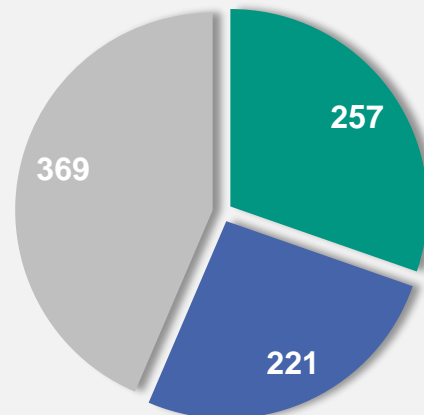


Research



Higher Education

KIT Budget 2014
€ 851 million



- Federal funds
- State funds
- Third-party funds

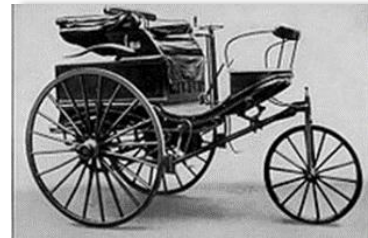


Innovation

Status of March 2016

KIT – Tradition and Vision

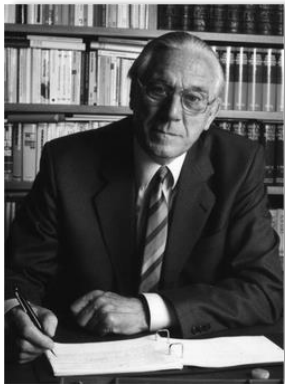
@ The first E-Mail
received in Germany



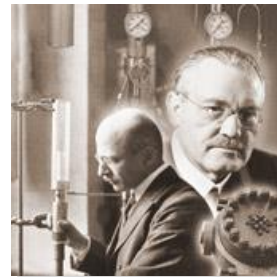
Carl Benz



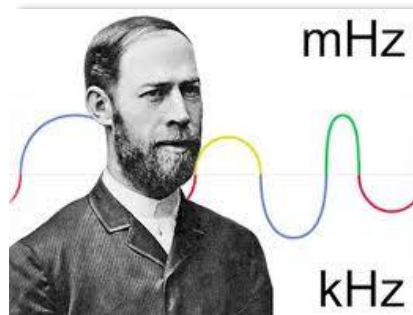
**The first Faculty of
Informatics in Germany**



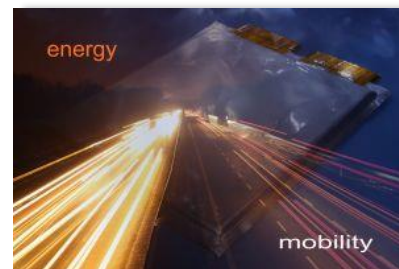
Karl Steinbuch



Fritz Haber



Heinrich Hertz



**One of the largest energy
research centers in Europe**



Ferdinand Braun

Steinbuch Centre for Computing (SCC)

Steinbuch Centre for Computing



Steinbuch Centre for Computing

Which demands do we satisfy?

- Computational Science & Engineering (CSE)
- Data-Intensive Science (DIS)
- For users in KIT, BaWü, Germany and international

Who are we?

Institute in KIT with service tasks

What do we do?

- Research, education and innovation in Supercomputing, Big Data and secure IT-federations
- Operation of large scale research facilities
- Operation of basic IT services

“Services for Science – Science for Services”

SCC IT-Services

- **Campus-wide IT-services** for > 25.000 students and > 10.000 employees
- **Networks:** 1700 switches/router, 1000 WLAN APs
- **Server virtualisation:** 800 virtual servers
- **HW server:** ca. 400 servers in 80 racks
- **Backup/archive:** 3000 Clients, 6 Libraries, 30000 Slots
- **E-Mail:** 45.000 mail boxes, 450.000 incoming mails/d, 200.000 outgoing mails/d
- **Databases:** ca. 1250 MS-SQL/Oracle DB
- **Web:** 600.000 web pages, 500 virt. web servers
- **Computer rooms:** 400 PCs, 250 courses
- **Portal for students/e-learning:** 8.000 users/d, 26.000 users/a, 8.300 active courses



Enabling Data-Intensive Science (DIS)

■ Operation of **GridKa**

- German Tier-1 in WLCG for an international community



■ Operation of the **Large-Scale Data Facility**

- Multi-disciplinary data centre for climate research, systems biology, energy research, etc. in BaWü



■ **Joint R&D&I** with scientific communities

- Generic data management research
- Data Life Cycle Labs in Helmholtz Programm SBD



Programm Supercomputing & Big Data

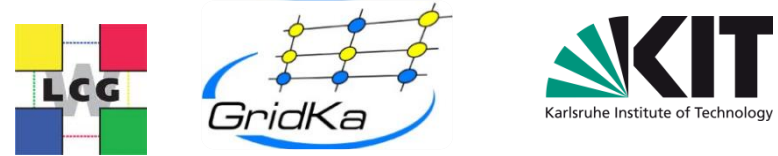
■ **Innovation driver** for SMEs, big industry und start-ups



■ **Active role** in national and international projects & initiatives



GridKa



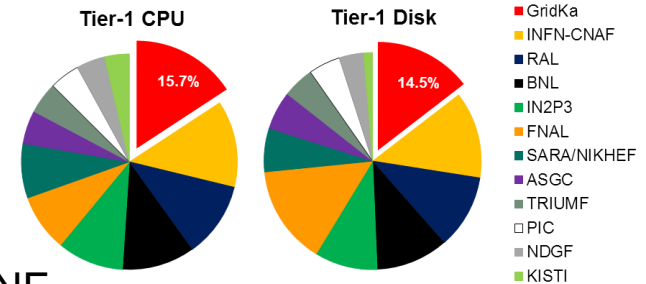
German Tier-1 Center in WLCG

- Supports all LHC experiments + Belle II + several small communities



Resources

- Computing: ~ 10.000 cores (160 kHS'06)
- Disk: 14 PB (netto)
- Tape: 18 PB (used)
- 100 Gbit/s network connectivity to LHCOPN, LHCONE



14% of LHC data permanently stored at GridKa

Among the largest and best performing T1s

Annual international GridKa School

- > 1400 participants in 13 years!
- 2015: ~100 participants / 15 countries



Global Grid User Support (GGUS) for WLCG

- If there is no ticket in GGUS, it is a not problem.*



Reliability measured by WLCG
Jan 2011- Dec 2013

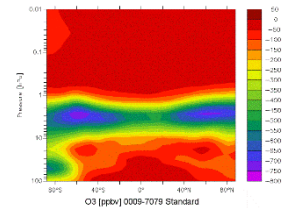
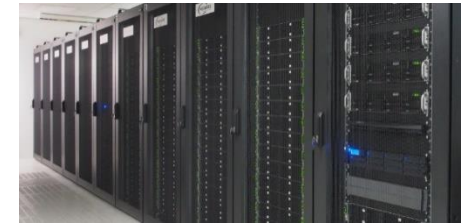
GridKa	99.5%
Ø other T1s	98.6%



Enabling Computational Science & Engineering (CSE)

■ Operation of **HPC systems**

- **ForHLR:** Tier-2 system in Germany
phase-1 (11.000 core) + phase-2 (> 23.000 cores)
total peak performance > 1,2 PetaFlop/s
peer-review access for users in BaWü und D
- **bwUniCluster:** Tier-3 system in the state BaWü
HPC capacity system with 8.500 cores
shareholder ownership with all 9 state universities

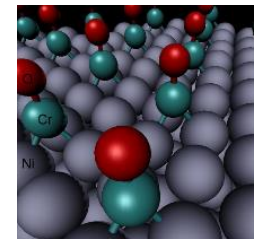


■ **Joint R&D&I** with scientific communities

- Application optimisation, scaling, model enhancements
- Simulation Labs in HGF Programm SBD



■ **HYIG** „Multiscale Biomolecular Simulation“



■ **Innovation drivers** for SMEs

■ **Architect** for HPC environment in BaWü

