

2017 SJTU-KIT Collaborative Research Workshop "Particles and the Universe"

Johannes Blümer

Division V Physics and Mathematics

What is KIT – today's host?

One legal unit



Merging two missions



State University

National Research Center

Three tasks



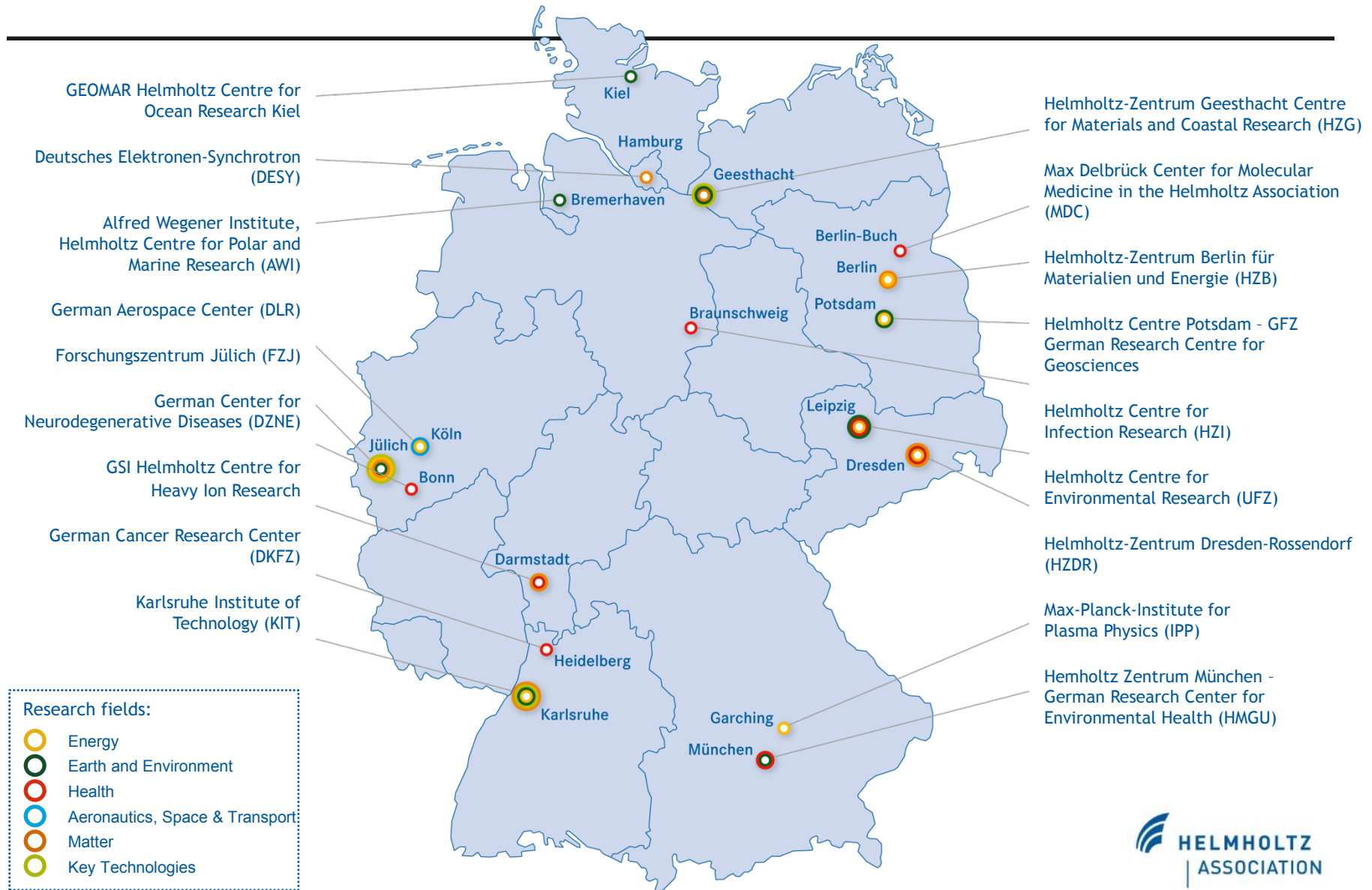
Research

Higher Education

Innovation

Altogether: *The Research University in the Helmholtz Association*

HELMHOLTZ CENTERS



Matter

Research Field

3 Programs – 7 Centers – 3,1 Billion € (2015-2019)*

Matter and the Universe

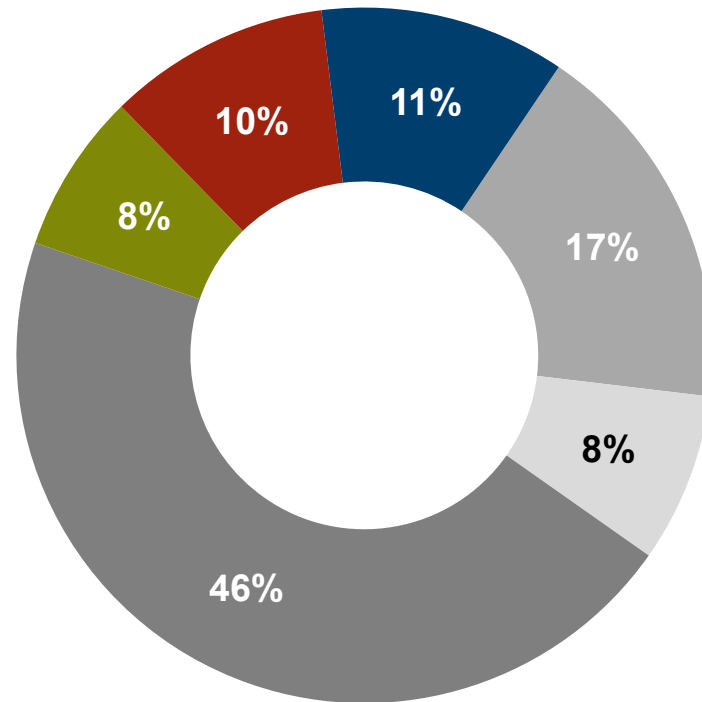
From Matter to Materials and Life

Matter and Technologies

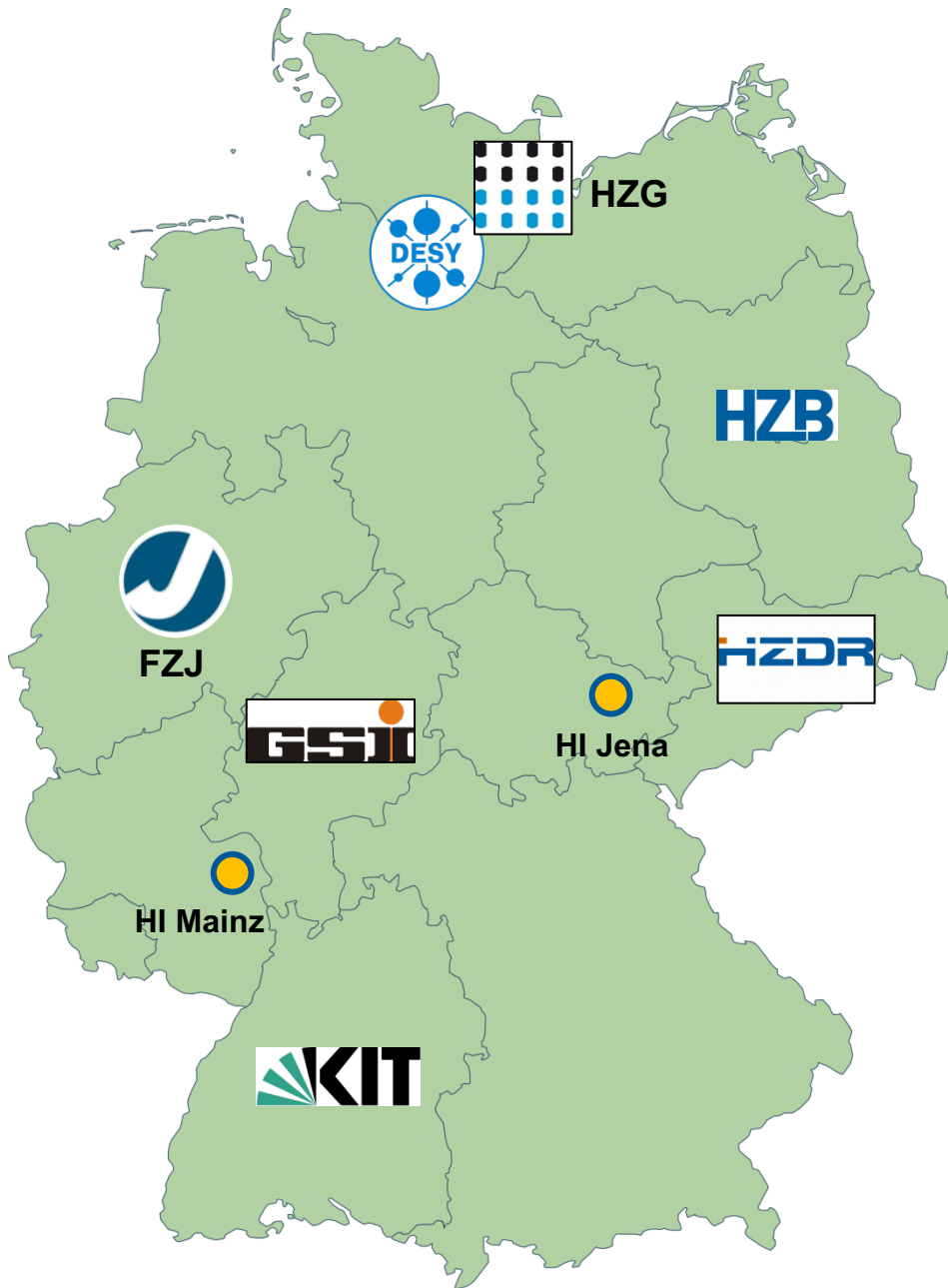
Large-scale User-Facilities

European XFEL (in-kind of DESY)

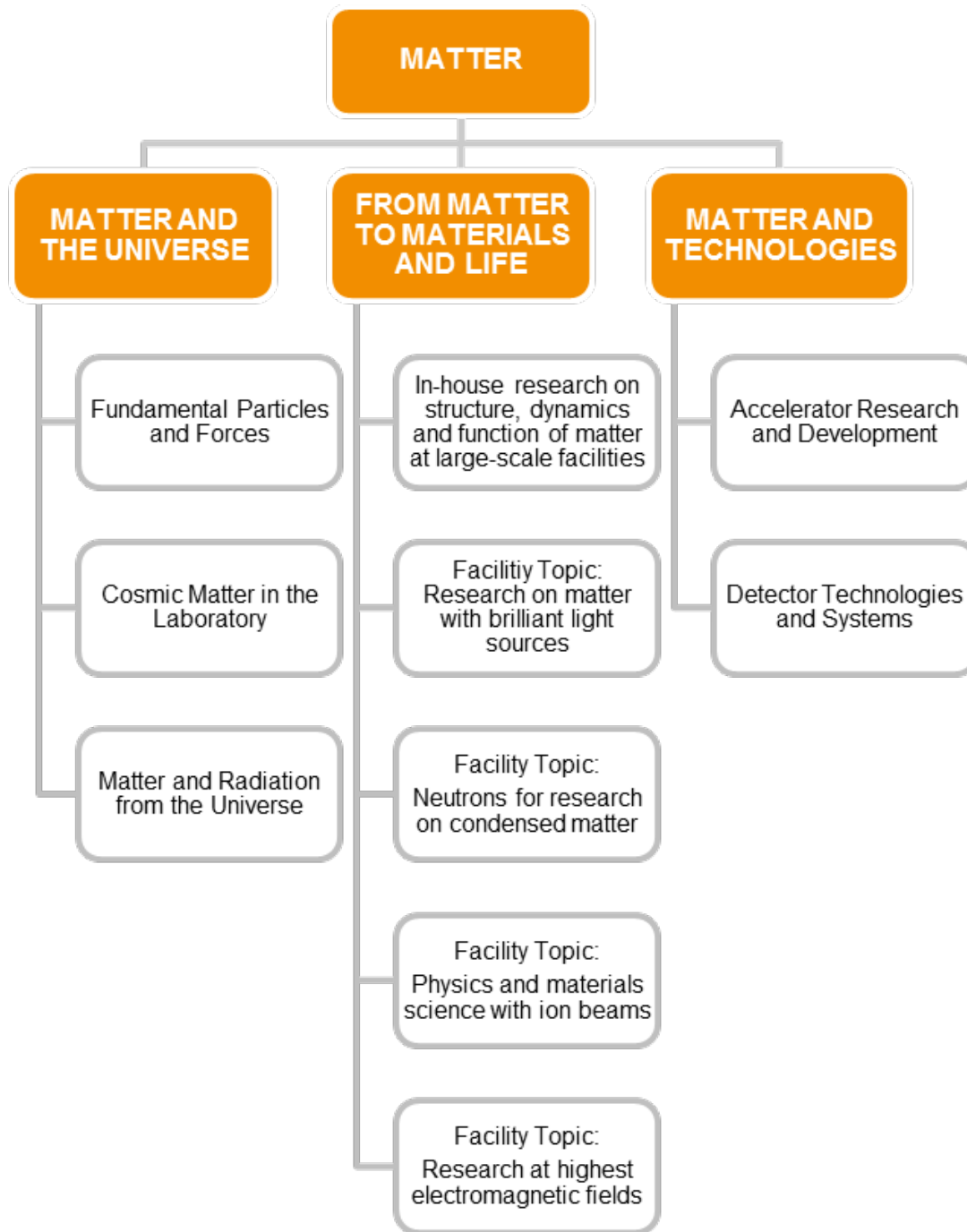
FAIR (in-kind of GSI and FZJ)



*) Base budget proposed in the Position Paper of the Research Field Matter in 2013.



LK II User facilities		Research Infrastructures and Cooperations	
		International	Local
DESY	FLASH PETRA III TIER-2	CERN, ATLAS, CMS Belle II CTA (under construction) Icecube XFEL	CFEL CSSB NanoLab DESY Testbeams DAF HIB@XFEL PITZ
FZJ	MLZ/FRM-II	ESS (under construction) ILL, SNS FAIR	JCNS COSY
GSI	UNILAC SIS18 ESR	FAIR (under construction) CERN, ALICE	HI Jena HI Mainz
HZB	BESSY II BER II		bERLinPro HoBiCaT GunLab
HZDR	ELBE HLD IBC	XFEL EMFL ESRF	HIB@XFEL WHELMI
HZG	GEMS-p GEMS-n	ESS (under construction)	EMSC
KIT	GridKa	KATRIN Auger IceCube	ATP FLUTE TLK SR Beamlines



MATTER AND THE UNIVERSE (MU)

Research Topics

RT1: Fundamental particles and Forces

DESY, KIT

RT2: Cosmic Matter in the Laboratory

GSI, FZJ

RT3: Matter and Radiation from the Universe

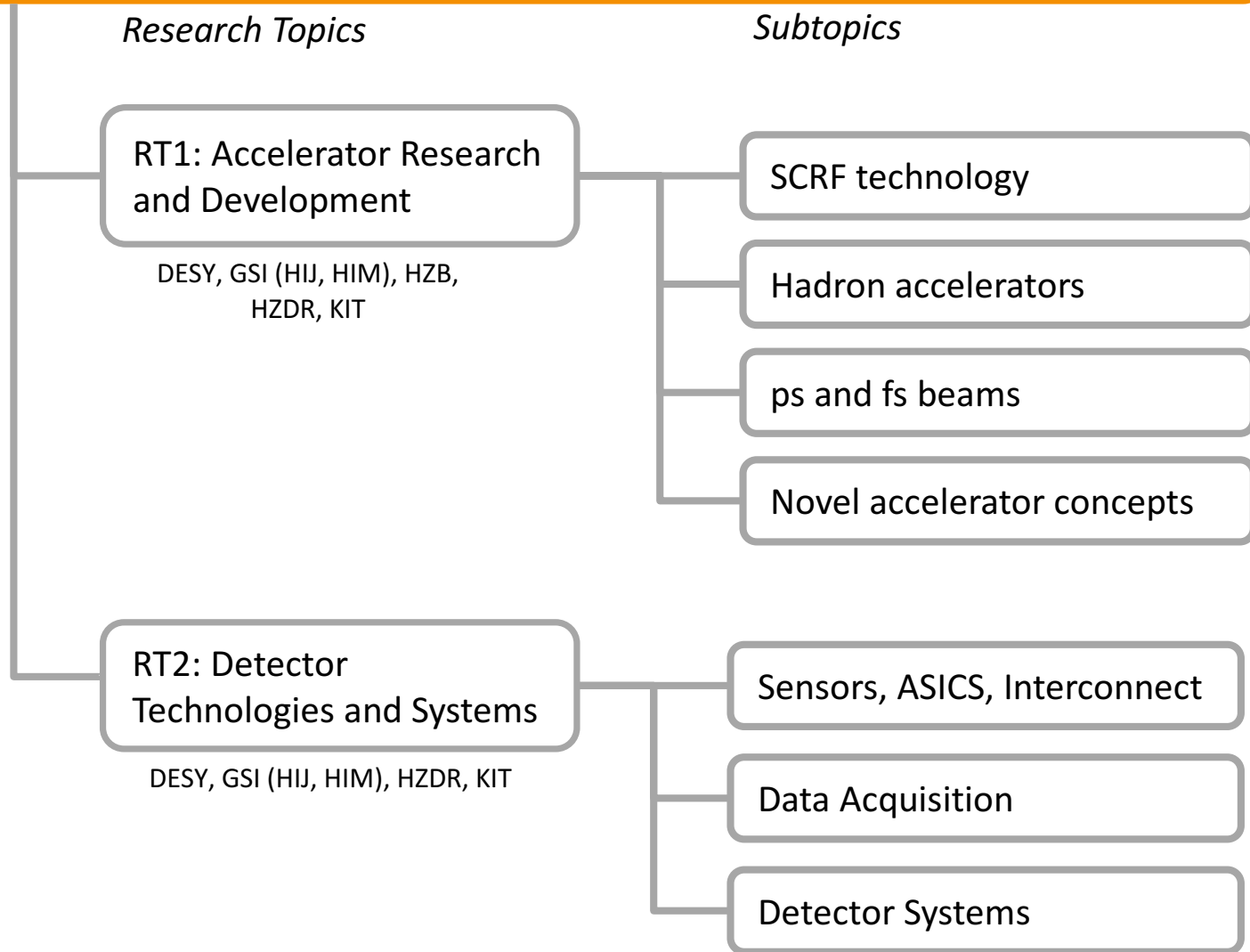
DESY, KIT

LK II User Facilities

LKII: TIER II (DESY, GSI)

LKII: GRIDKA (KIT)

MATTER AND TECHNOLOGIES (MT)



KIT – Selected Facts and Figures

Employees 2016

Total	9 239
Teaching and research	5 773
Professors	365
Foreign scientists and researchers	978
Infrastructure and services	3 466
Trainees	464



Research

Students

Winter semester 2016/17	25 892
-------------------------	--------



Teaching

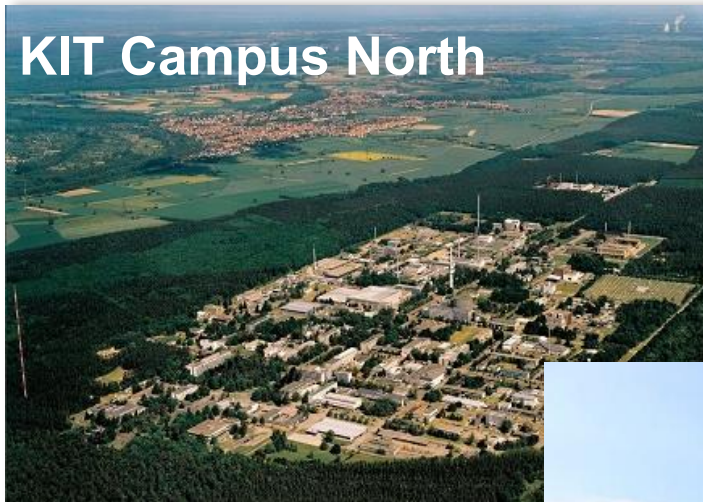
Budget 2016 in Million Euros (provisional figures)

Total	841.8
Federal funds	263.2
State funds	247.2
Third-party funds	331.4



Innovation

KIT – Research at five locations



KIT Campus South

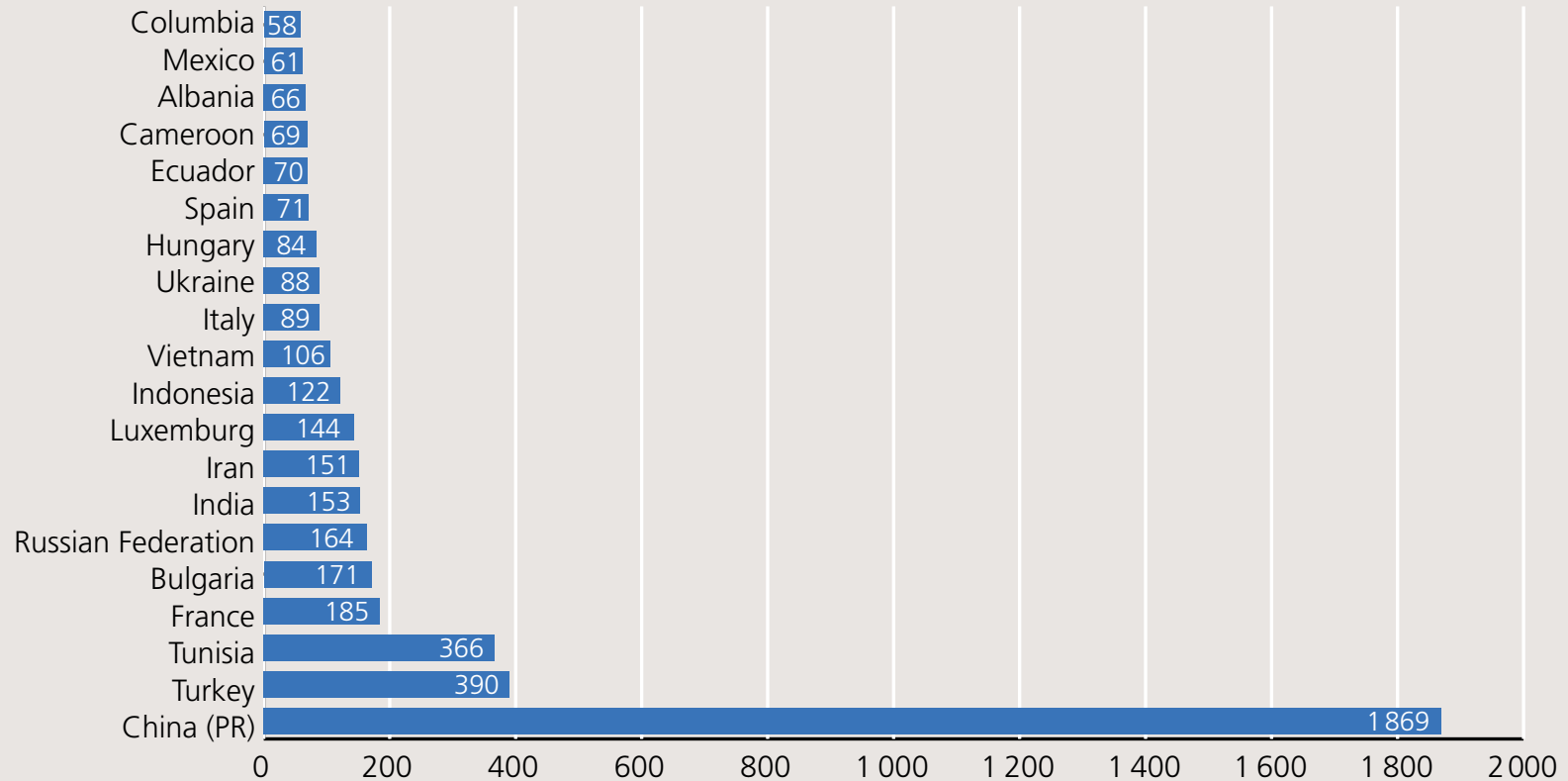




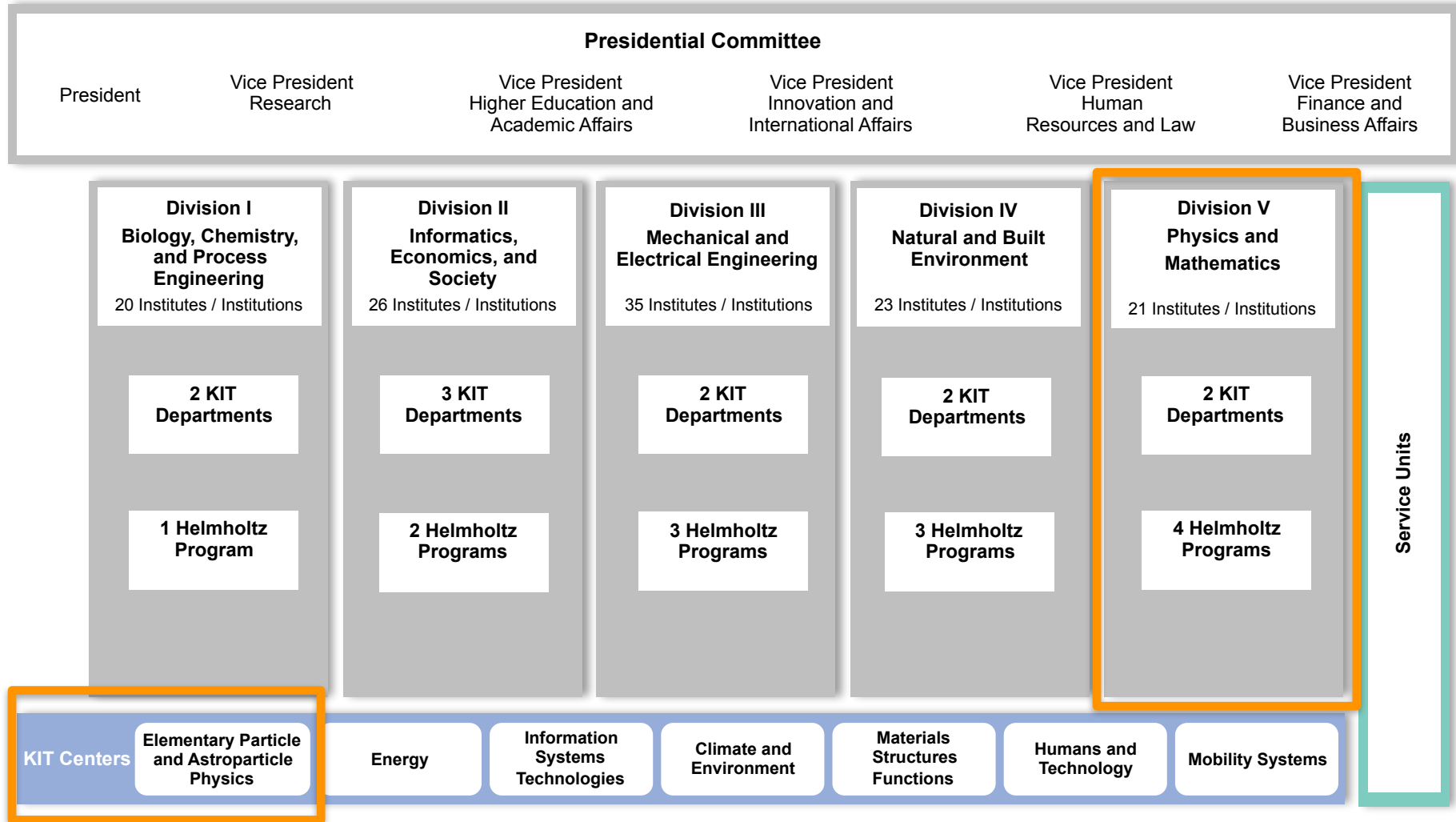
KIT Campus North

Students

Home Countries of Foreign Students (Top 20 of 117)



KIT – Science organization



Cooperation opportunities

Helmholtz

Young Investigator Groups

Female professors

Networking and Initiative Funds of the Helmholtz President

...

Collaborative Research Program of the **BMBF** ErUM & other
Other subjects have priority, but still...

Deutsche Forschungsgemeinschaft **DFG**
must be complementary to other funding

Max Planck Society
Heidelberg?

I wish you an enjoyable and fruitful workshop

See you next time at SJTU