



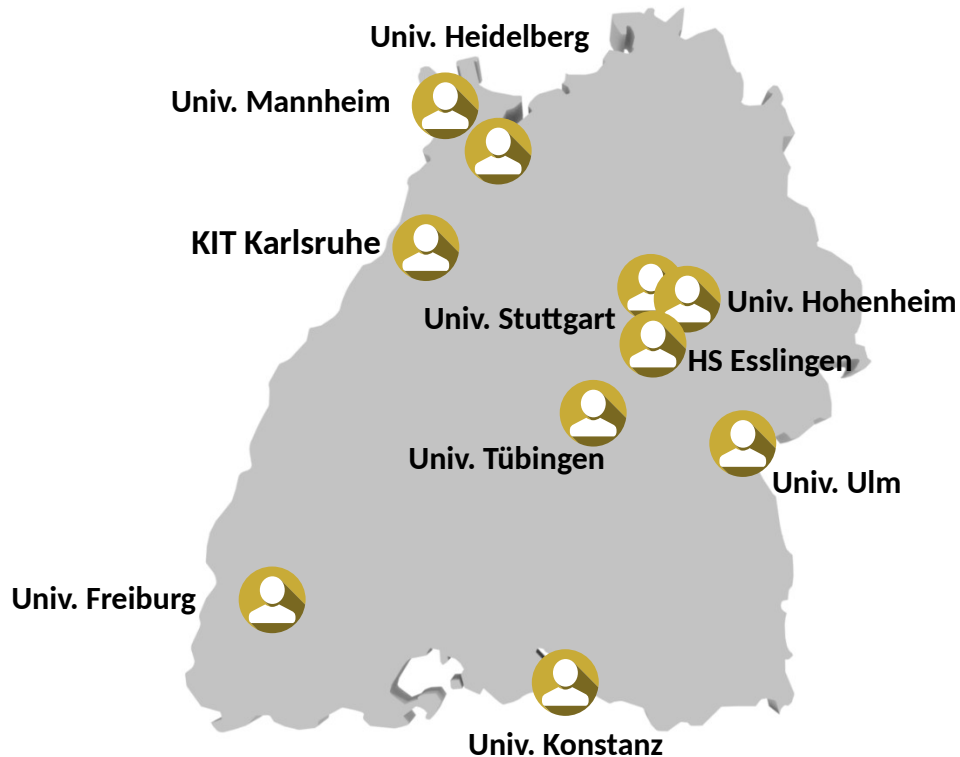
bwHPC-S5: **Scientific Simulation and Storage Support Services** *as part of bwHPC*

Robert Barthel, Project Office bwHPC-S5
9th bwHPC Symposium 2023, 23.10.2023



bwHPC Consortium and Funding

- Universities in the state of Baden-Württemberg, Germany
 - since **2013**
state-wide infrastructure for HPC and Data Facilities and User Support



Baden-Württemberg

MINISTERIUM FÜR WISSENSCHAFT, FORSCHUNG UND KUNST

DFG Deutsche
Forschungsgemeinschaft
German Research Foundation

Background & Motivation

- Typical HPC / Data Facilities:
 - Many entry level systems at different location
 - Or state-wide systems but local administraction/identity management
 - Shortage of local expertice to fully support all scientific domains
- Solutions: **Coordination and state-wide policies** to simpify usage for users
 - establishing „federated“ services



Approach (1/2)

- (IT) framework of universities (by ALWR-BW) & (to be) approved by DFG

In Baden-Württemberg:

2013-2018, 2018-2024, 2025-2032 :

- bwHPC = **H**igh **P**erformance **C**omputing (HPC) & **D**ata **I**ntensive **C**omputing (DIC) ... in **B**aden-**W**ürttemberg

- Defining:

- policies for shared infrastructure and support structures
- locations for infrastructure
- governance
- implementation and coordination platforms,
e.g. state-wide IT support projects **bwHPC-S5** ...



Approach (2/2)

- (IT) framework of universities (by ALWR-BW)

In Baden-Württemberg:

2025-2032 :

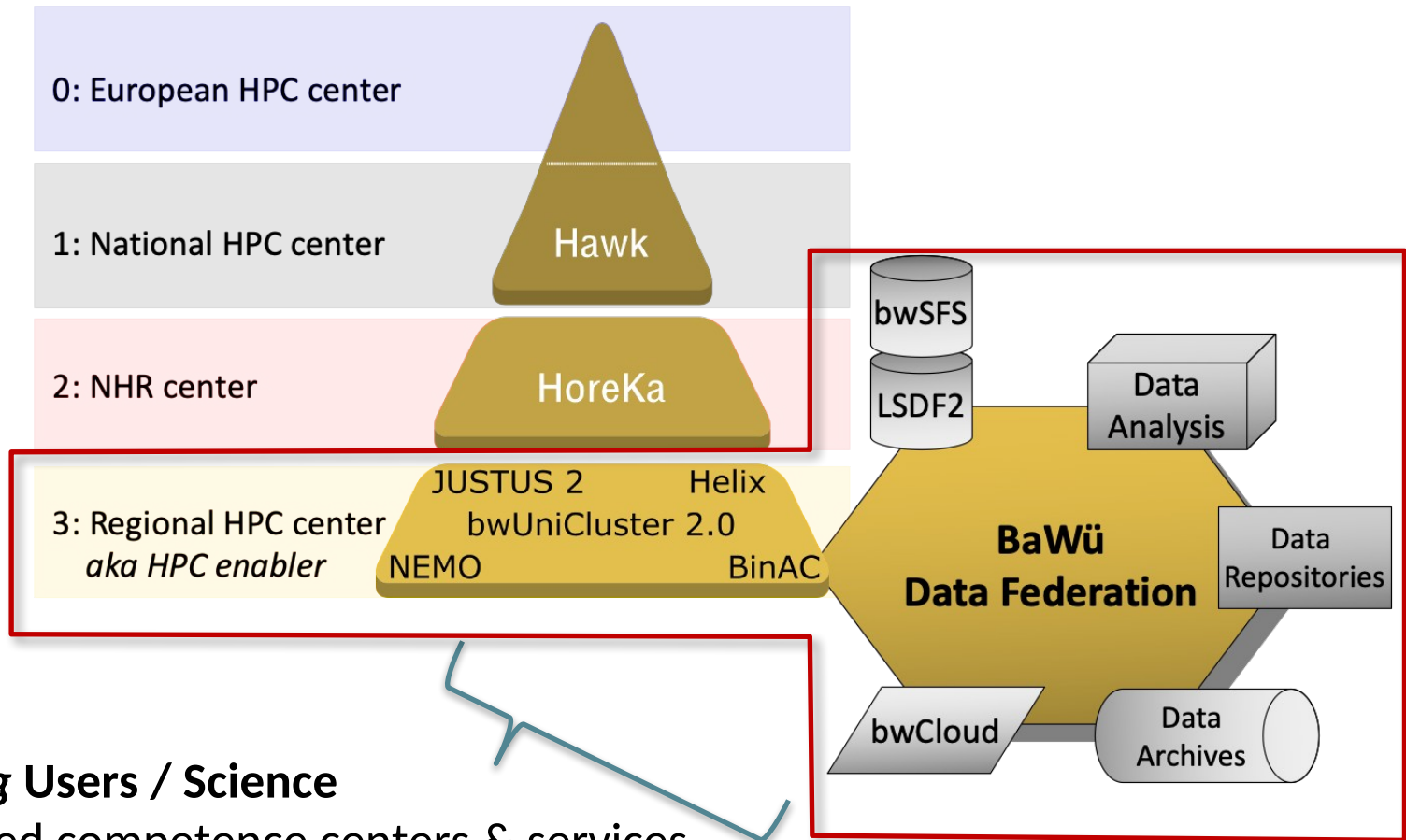
- Key topics for bwHPC-S5:

- Integration in NHR, (GCS, EuroHPC) + NFDI
- Integration of new system and method concepts (**AI, ML or quantum computing**) in support structures
- More comprehensive needs analyses
- Increase **energy efficiency**
- Flexible integration of new system components and architectures
- Software strategies towards **sustainability**
- Expand functionalities of BaWü data federation
- Strategies handling **sensitive data** and **digital sovereignty**

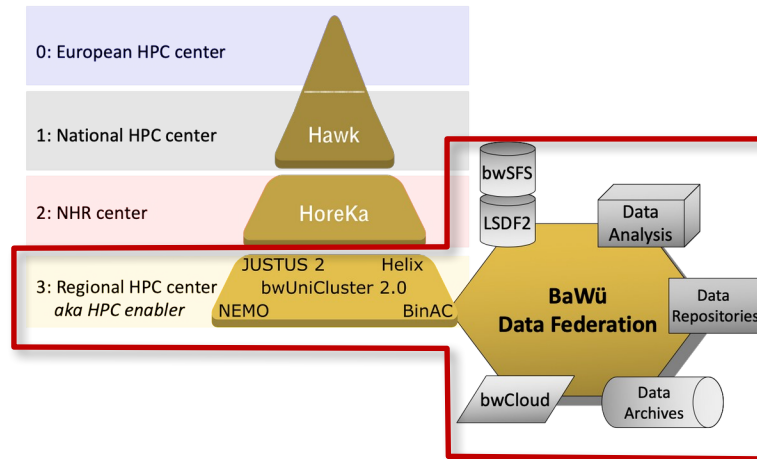


Federation by bwHPC (1/2)

- Federation of HPC enabling systems being part of a state-wide data federation
 - both tailored to the needs of defined scientific domains



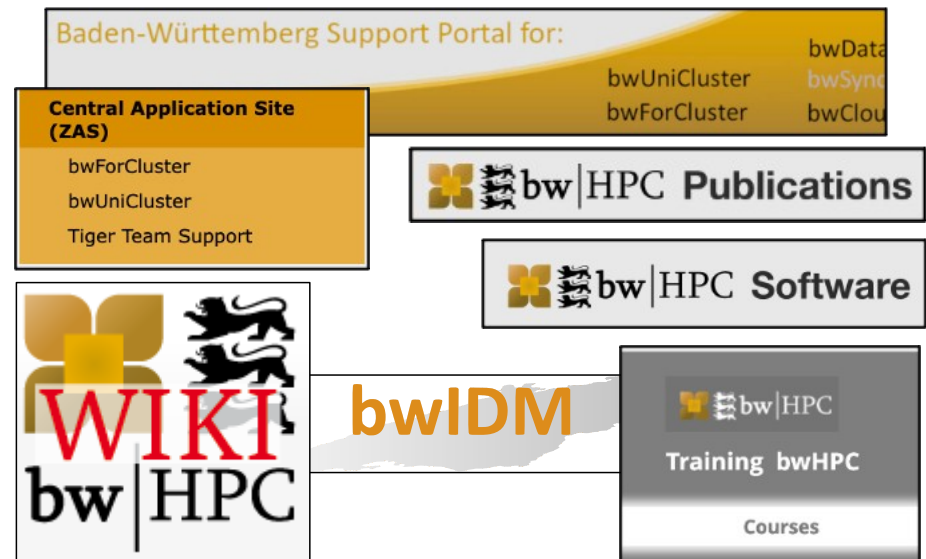
Federation by bwHPC (2/2)



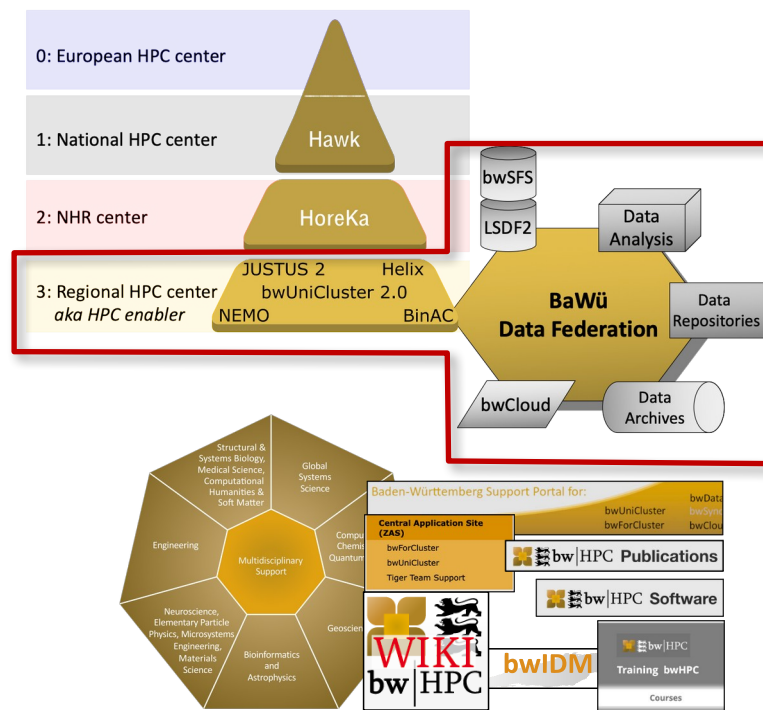
bwHPC competence centers



/ portals and services



bwHPC at a larger scale



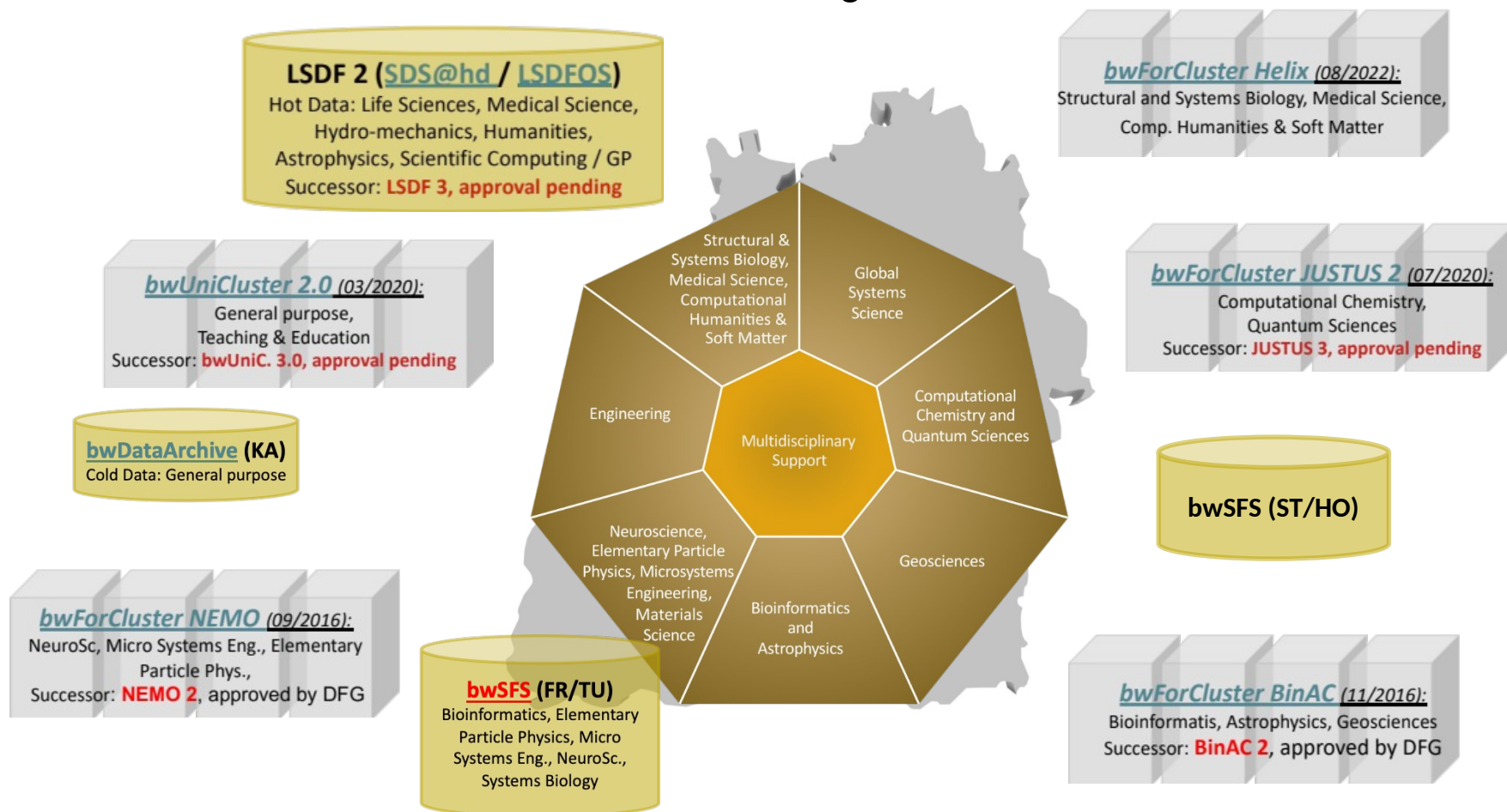
Governance: *Policy making and assessment procedures to (re)define federation*

- Baden-Württemberg:
 - Steering Committee for digital research infrastructure
 - User Steering Committee + Computer center directors committee
 - Implementation tasks and its evaluation in „phases“

Structuring bwHPC federation

Federated bwHPC Competence Centers

- Coordinate, channel and provide expertise in defined science and research areas for HPC clusters of tier 3 and storage facilities



Highlights of bwHPC-S5 (1/3)

- 7 bwHPC competence centers +1 „cross-sectional“ team
 - Covering 33+ DFG scientific domains (2nd level)

- Supporting 5500+ Users:

- State-wide support portal



- 700+ Support answers quarterly

- Community specific software:



- <https://www.bwhpc.de/software.php>

- 680+ Software modules

- Categorization of publications



- 2100+, https://www.bwhpc.de/user_publications.php

Tiger Team projects:

<https://zas.bwhpc.de/shib/call4tt.php>

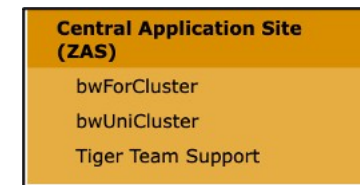
110+ projects

- Porting of applications to bwUniCluster/bwForCluster
- Optimization of batch job scripts
- Parallelization of sequential parts of code
- Build configuration
- Usage/Linkage of performance-optimized libraries
- Implementation and optimization of workflows
- Checkpointing/restart functions of applications
- Implementation and optimization of data management
- I/O performance optimization

Highlights of bwHPC-S5 (2/3)

■ Supporting 5500+ Users:

- Training: State-wide coordination & program
 - training.bwhpc.de
 - 400-500 training course participants per semester
 - Incl. Web seminars, e-learning courses
- ZAS: State-wide cluster assignment portal
 - zas.bwhpc.de
 - 450+ Compute Projects (since 2013)
- Wiki: State-wide information portal
 - 165+ user guides ...
 - 65 authors
- Surveys: annually since 2018

A screenshot of a survey form titled '3. Ressourcen, Software' with a sub-section 'Ressourcen'. It contains five questions (3.1 to 3.5) with various response options like radio buttons, checkboxes, and smiley faces. A pencil icon and a vertical column of smiley faces (green, yellow, red) are also visible.

Highlights of bwHPC-S5 (3/3)

- Supporting 5500+ Users:

- Annual state-wide results workshops (= bwHPC symposia)

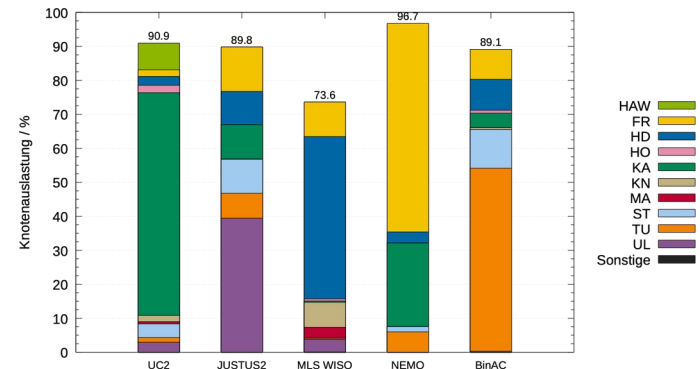


- Under the „hood“ activities

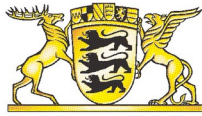
- State-wide processing of KPIs
- Technology evaluation & implementation to enhance services



- Aiding procurement processes & defining operating models



Acknowledgement



Baden-Württemberg

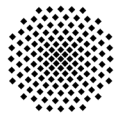
MINISTERIUM FÜR WISSENSCHAFT, FORSCHUNG UND KUNST



Deutsche
Forschungsgemeinschaft

German Research Foundation

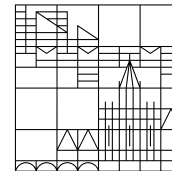
- And all contributors and members of bwHPC-S5:



Universität Stuttgart



Universität
Konstanz



UNIVERSITÄT
HEIDELBERG
ZUKUNFT
SEIT 1386



universität
uulm

universität freiburg

Thank you for your attention!



- <https://www.bwhpc.de>
- office@bwhpc.de