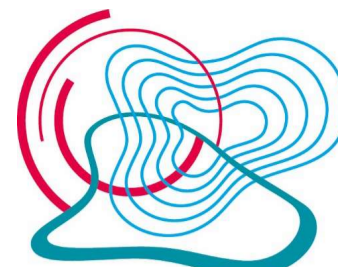


# On the maintenance of processing stability and consistency in laser-directed energy deposition via machine learning



Helmholtz-Zentrum  
**hereon**

M. Wang, N. Kashaev

Helmholtz-Zentrum Hereon, Institute of Materials Mechanics  
Department of Laser Processing and Structural Assessment

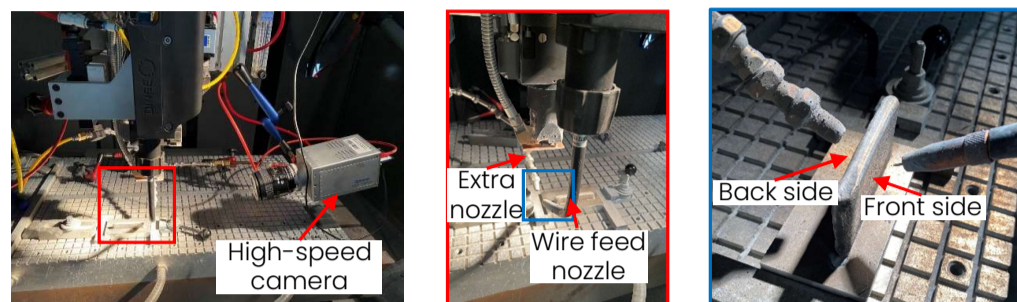
## Background

- Deterioration of surface roughness and porosity level caused by asymmetrical blowing of shielding gas.
- Heat accumulation and property variation attributed to use constant process parameter in layer-by-layer deposition.
- Machine learning was adopted as a post process for quality control, while an in-situ adjustment of process parameter via machine learning has not been achieved.

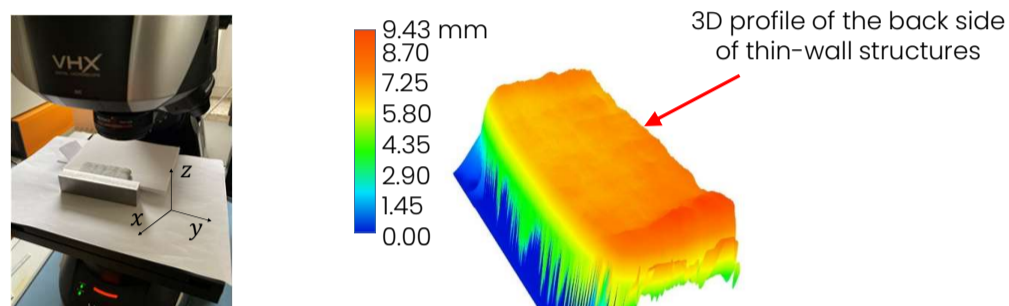
## Highlights

- Blowing directions of shielding gas affect the processing stability and the properties of specimens.
- An extra nozzle installed on the back side improves the processing stability.
- Efficient finding of the appropriate flow rate of shielding gas by using a convolutional neural network.
- Maintenance of processing stability and consistency by in-situ parameters adjustment with a convolutional neural network.

## Experimental setup

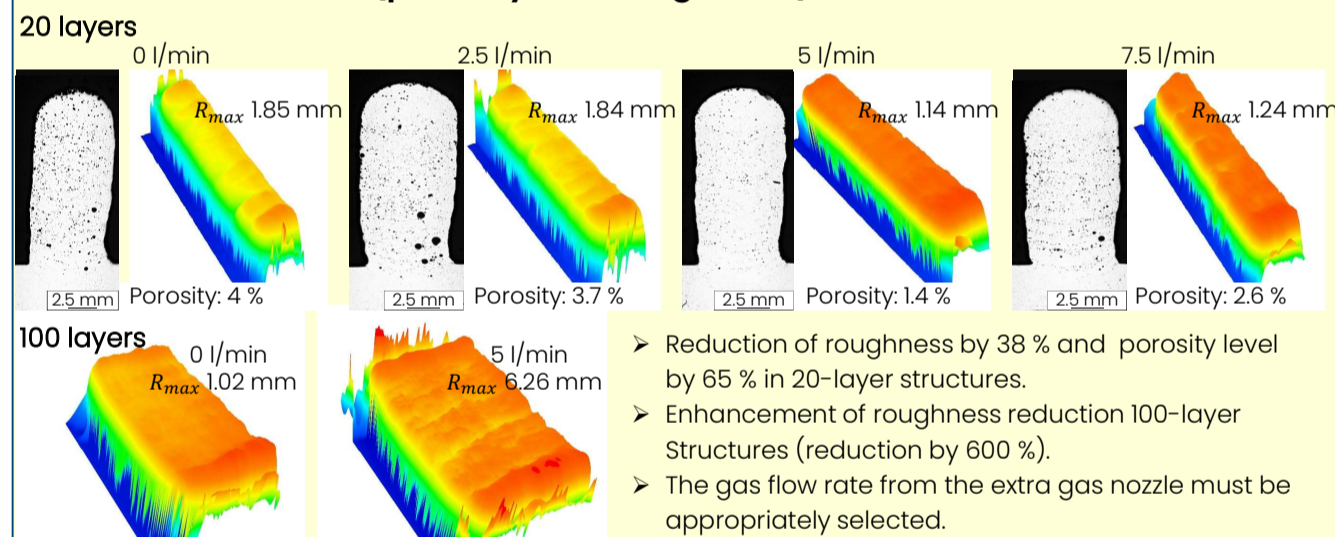


## Roughness characterization

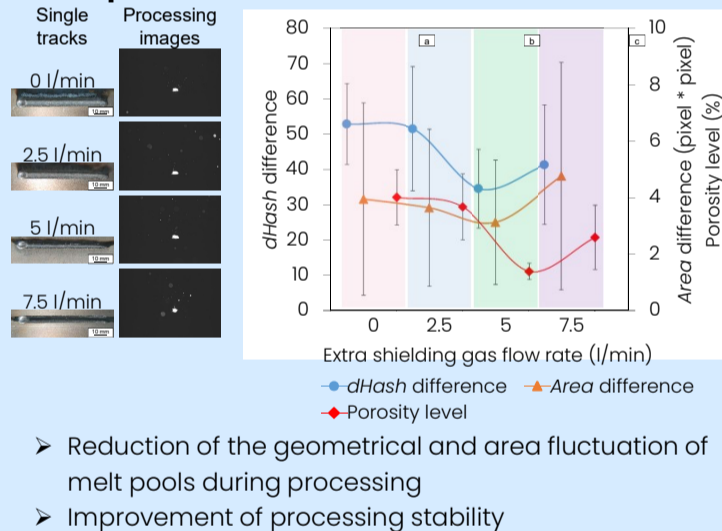


## Improvement of processing stability via an self-developed shielding gas system

### Effects of extra shielding gas flow on the properties of thin-wall structures (porosity and roughness)

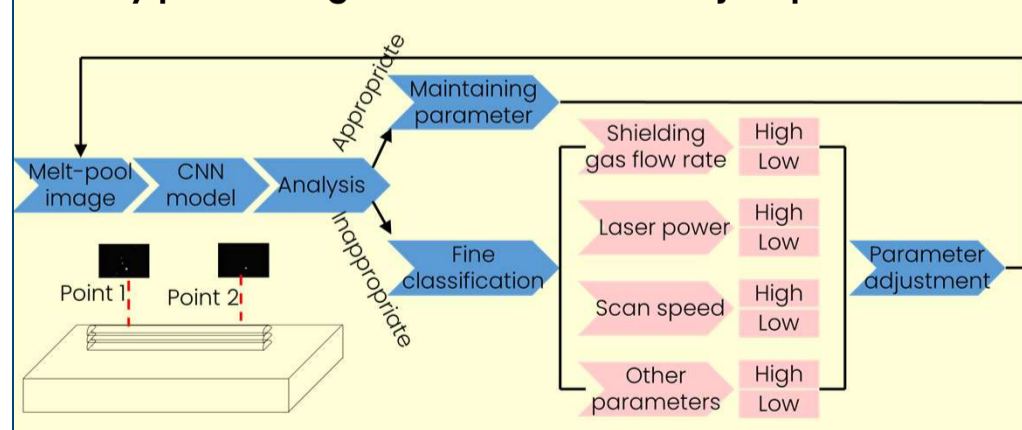


### Geometrical and area fluctuation of melt pools

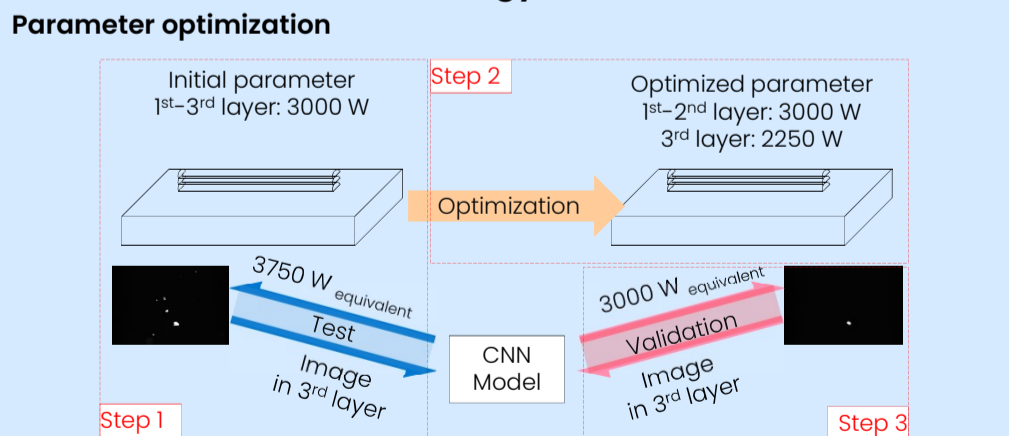


## Maintenance of processing stability via machine learning

### Workflow of using the convolutional neural network to Identify processing states and in-situ adjust parameters



### Validation of the methodology



## Conclusions

- By installing an extra shielding gas nozzle, the porosity level and surface roughness can be reduced as it enhances the processing stability.
- The integration of the convolutional neural network and laser-directed energy deposition enables in-situ parameter adjustment, ensuring processing stability and maintaining consistent properties across different layers.

