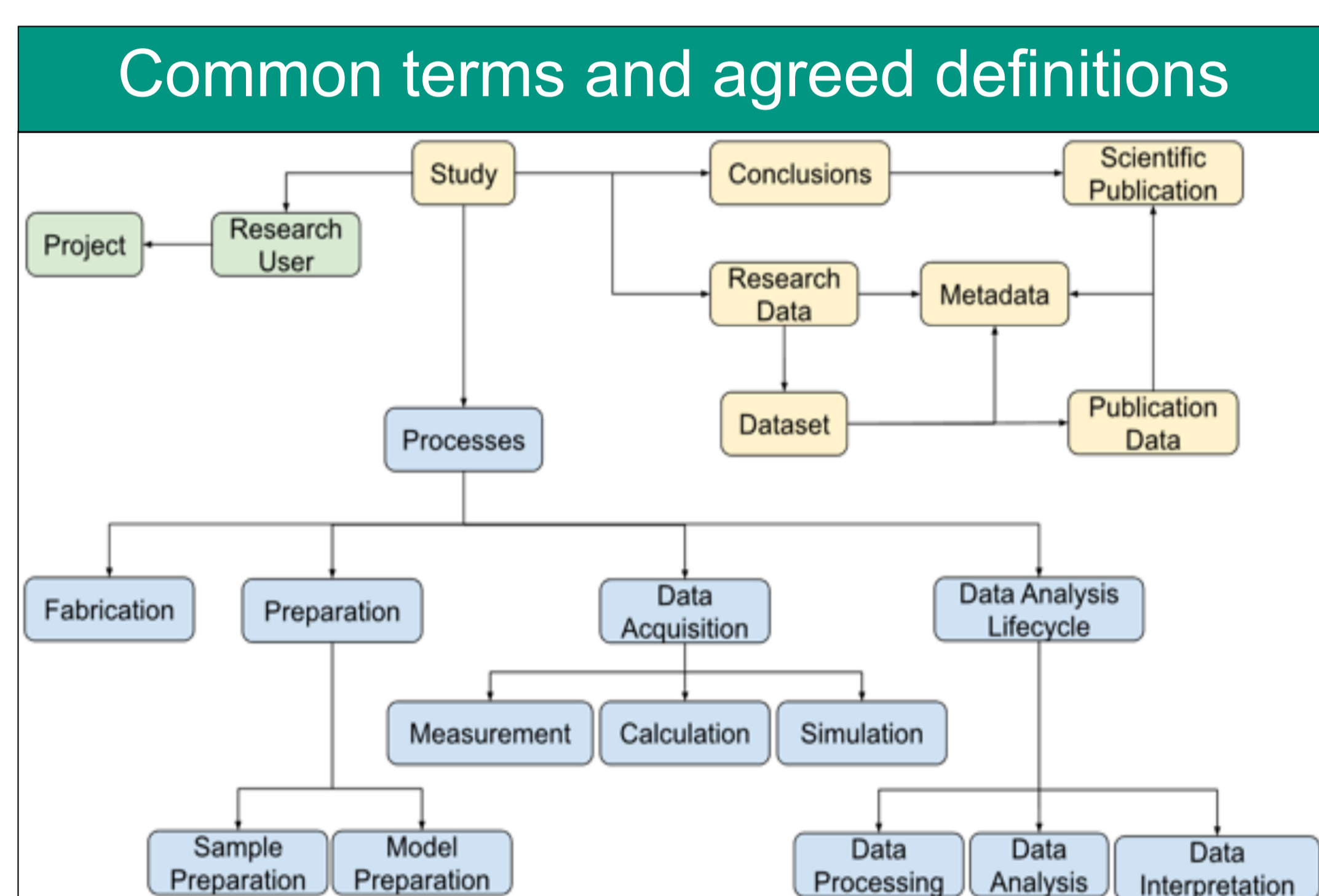
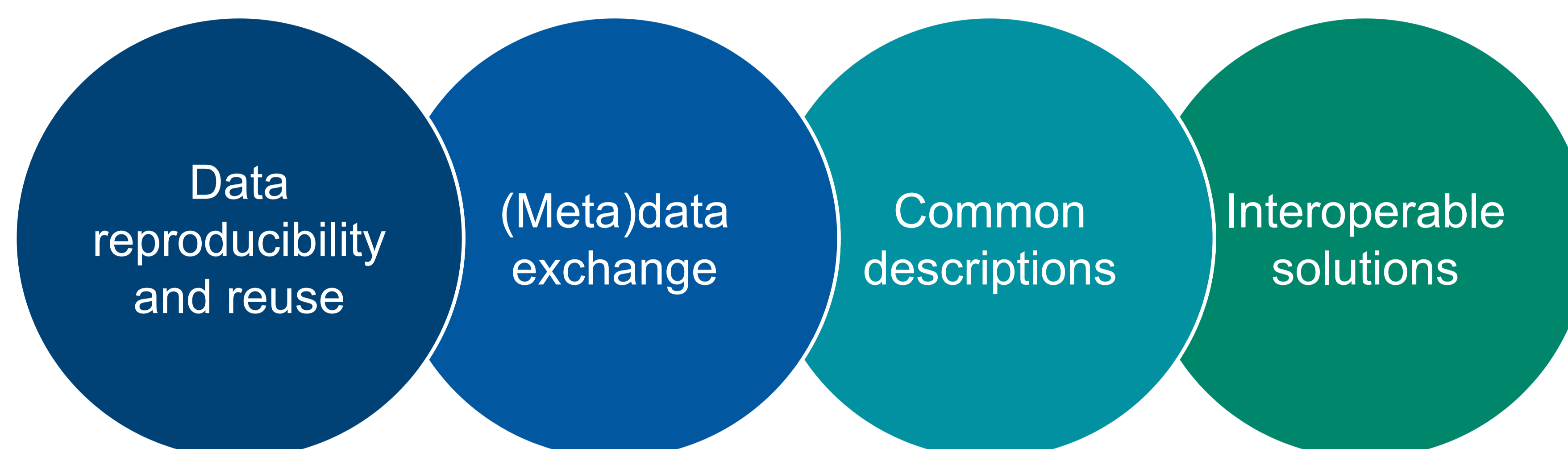
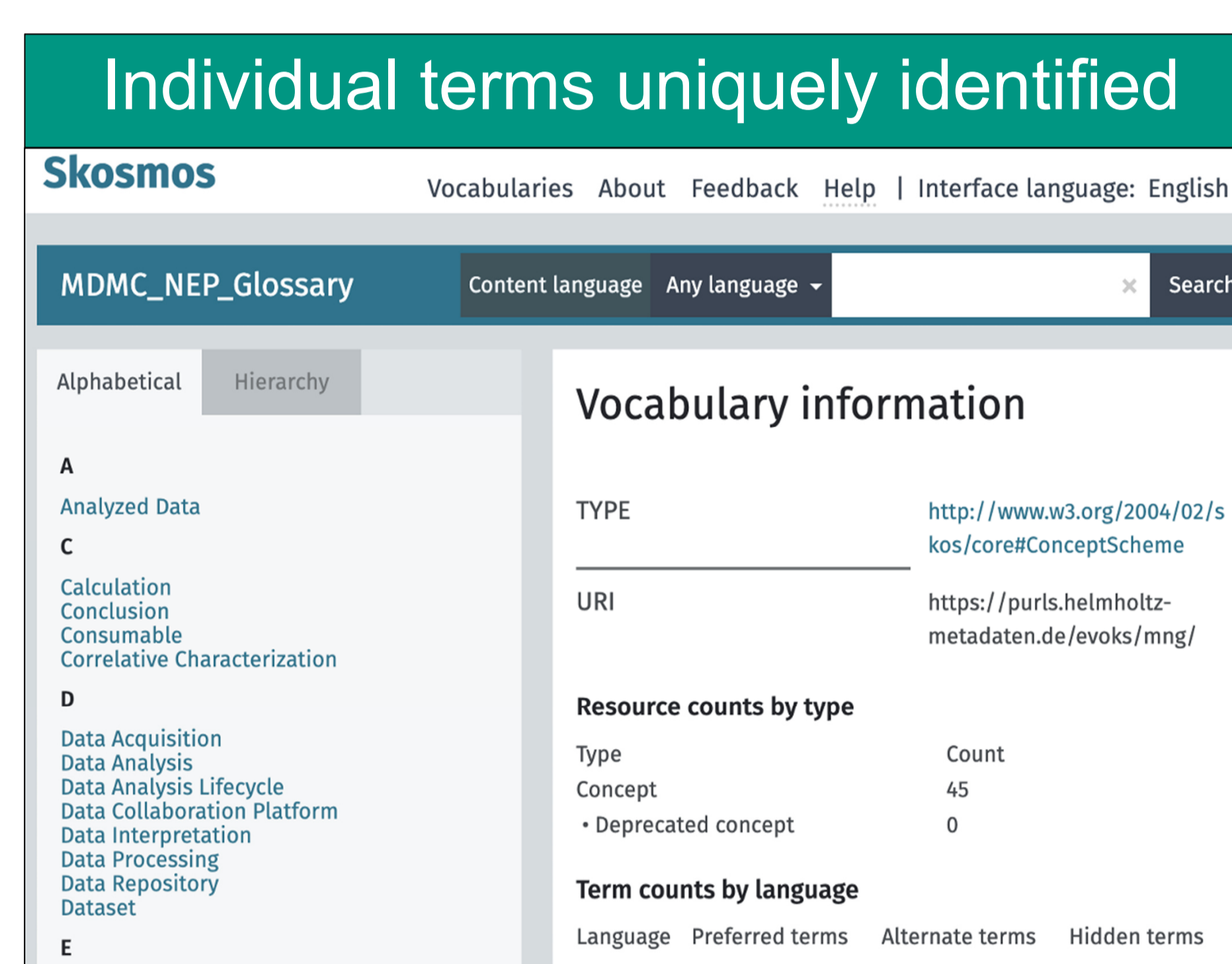


MDMC Metadata Working Group: Results 2024

Rossella Aversa, Richard Thelen on Behalf of the MDMC Metadata WG



<https://doi.org/10.5281/zenodo.10663833>



https://metarepo.nffa.eu/evoks/MDMC_NEP_Glossary-1

Structured metadata schemas integrating the individual terms, to be used as template in ELNs or LIMSs

```
"accelerationVoltage": {
  "$ref": "#/defs/voltageDetails",
  "termURI": "https://service.tib.eu/ts4tib/api/ontologies/emg/terms?iri=https%3A%2F%2Fpurl.s.helmholtz-metadaten.de%2Femg%2FEMG_0000004",
  "title": "",
  "description": ""
},
```

<https://metarepo.nffa.eu/api/v1/schemas/sem?version=19>

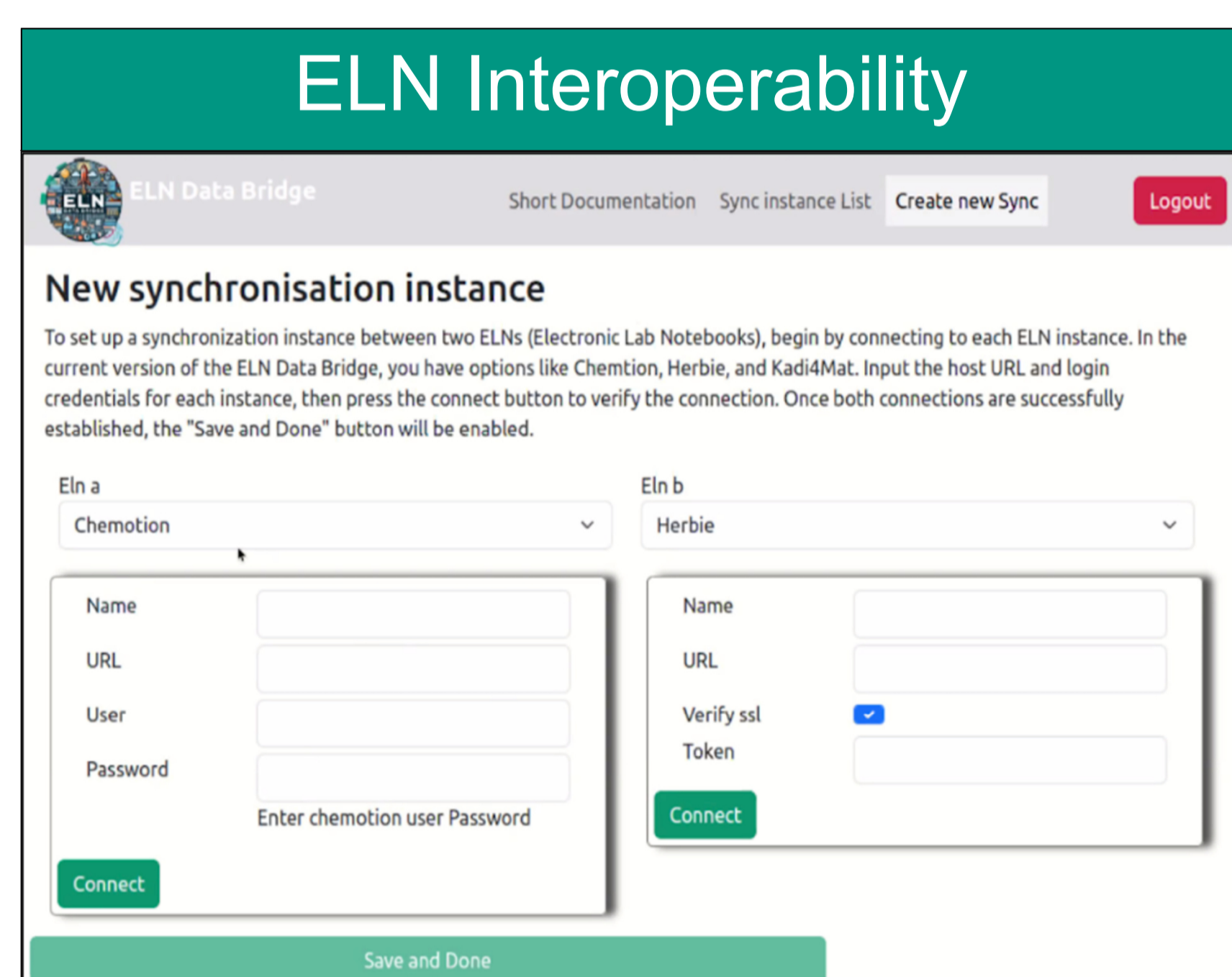
Automatic metadata extraction from data files



Mapping Service

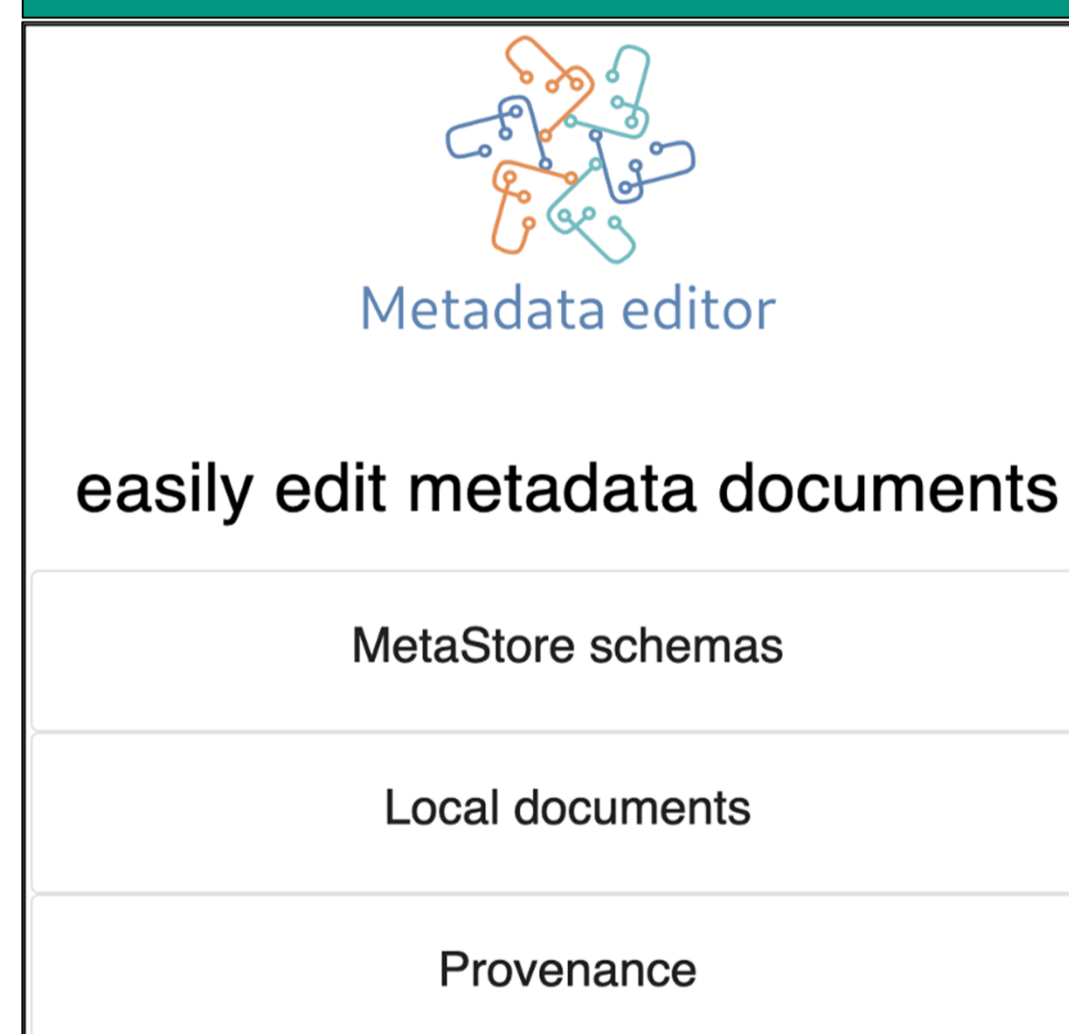
Extract metadata and map it to a JSON schema.

<https://metarepo.nffa.eu/frontend/mapping-service-ui.html>



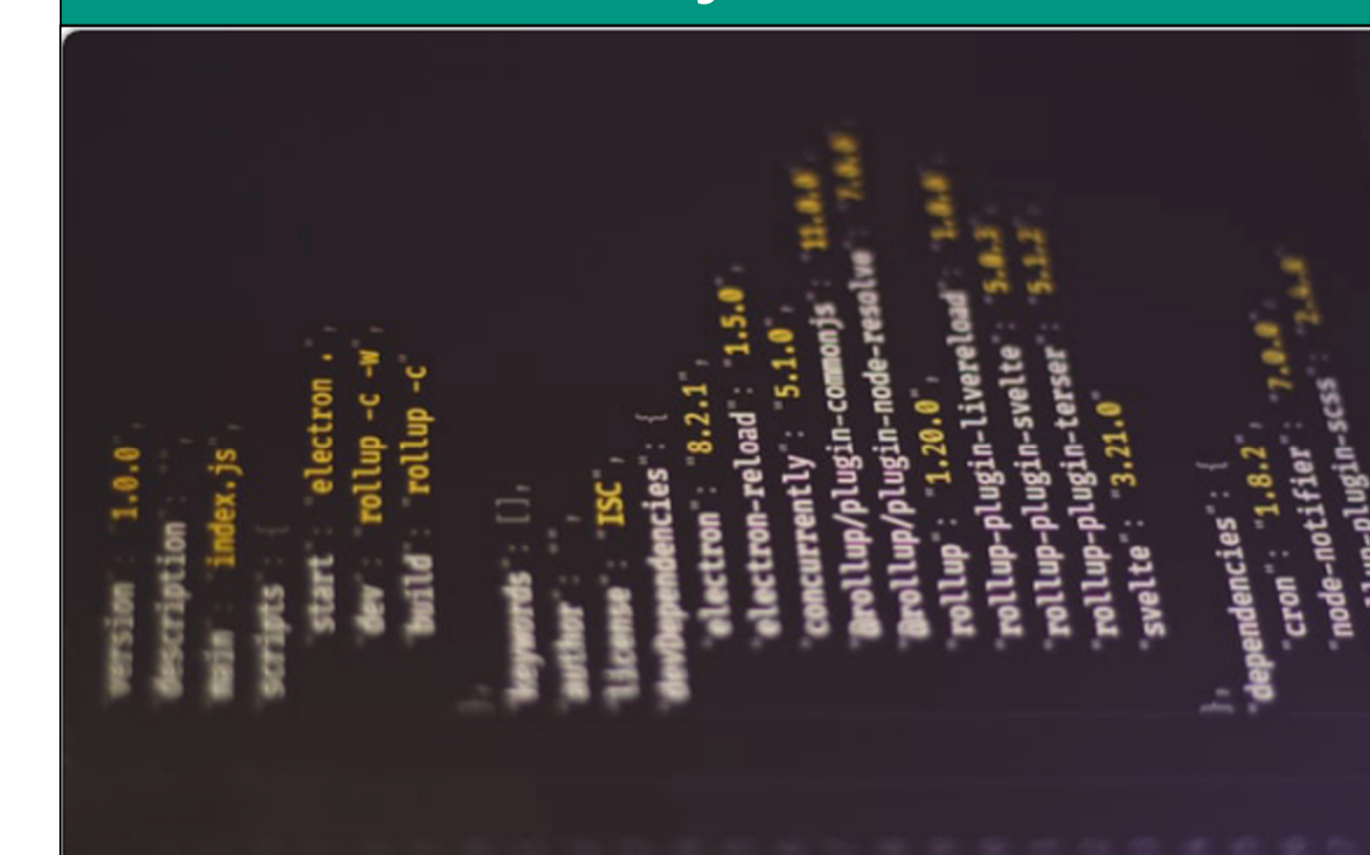
<https://helmholtz-metadaten.de/en/inf-projects/eln-diy-meta-eln-driven-interoperability-for-metadata>

Easy-to-use editor to load/edit metadata documents



<https://metadata-editor.gitlab.io/documentation/>

Repository for metadata schemas and metadata documents linked to the data they describe

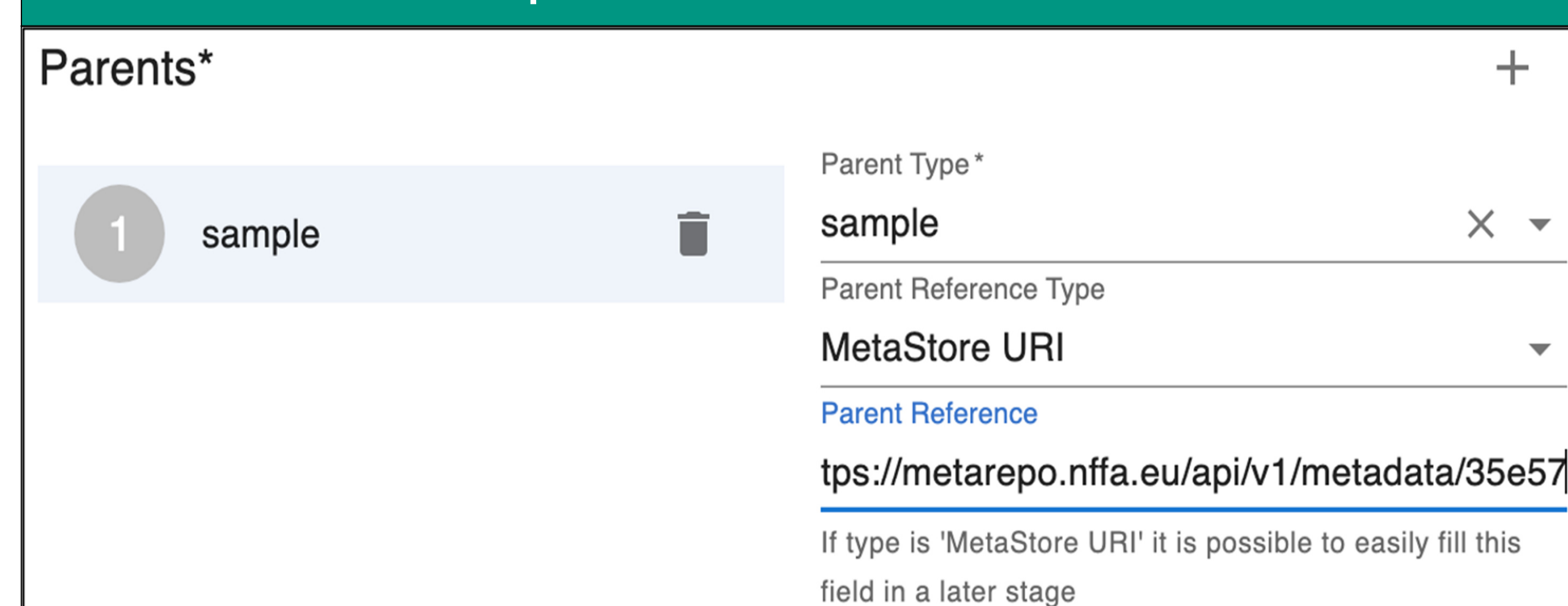


MetaRepo

Manage and access your metadata schemas and documents.

<https://metarepo.nffa.eu/frontend/schema-management.html>

Track provenance via metadata



<https://metadata-editor.gitlab.io/documentation/>