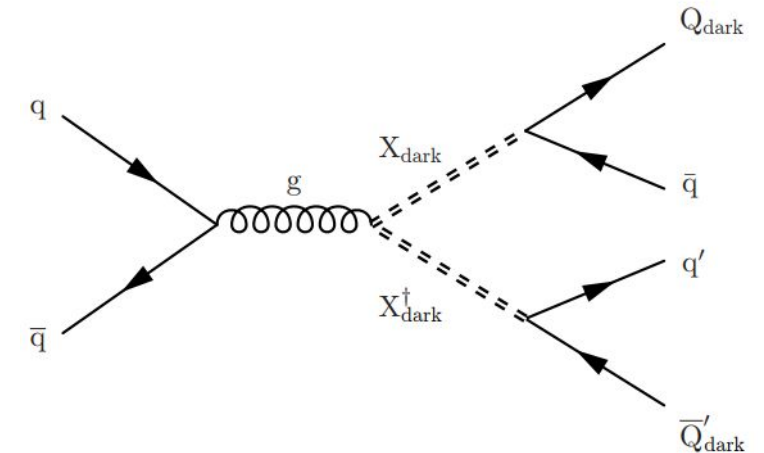


ArXiv Review 12.08.2024

Marcel Gaisdörfer

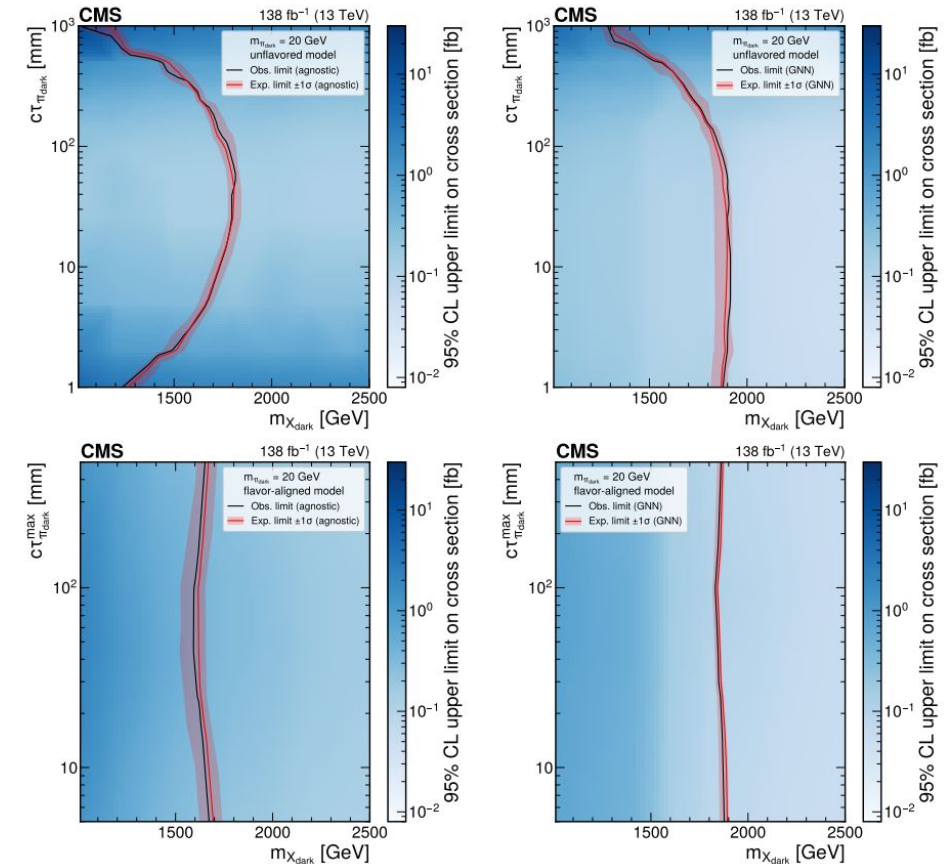
Search for dark QCD with emerging jets in proton-proton collisions at $\sqrt{s} = 13$ TeV

- family of dark quarks coupling to the SM via scalar mediator X_{dark}
- dark quarks form dark pions with significant lifetime, decay into SM at displaced vertices
- signature: 2 SM jets + 2 two jets with multiple displaced vertices (emerging jets)
- main background: 4 SM jets with 2 misidentified as emerging jets



Search for dark QCD with emerging jets in proton-proton collisions at $\sqrt{s} = 13$ TeV

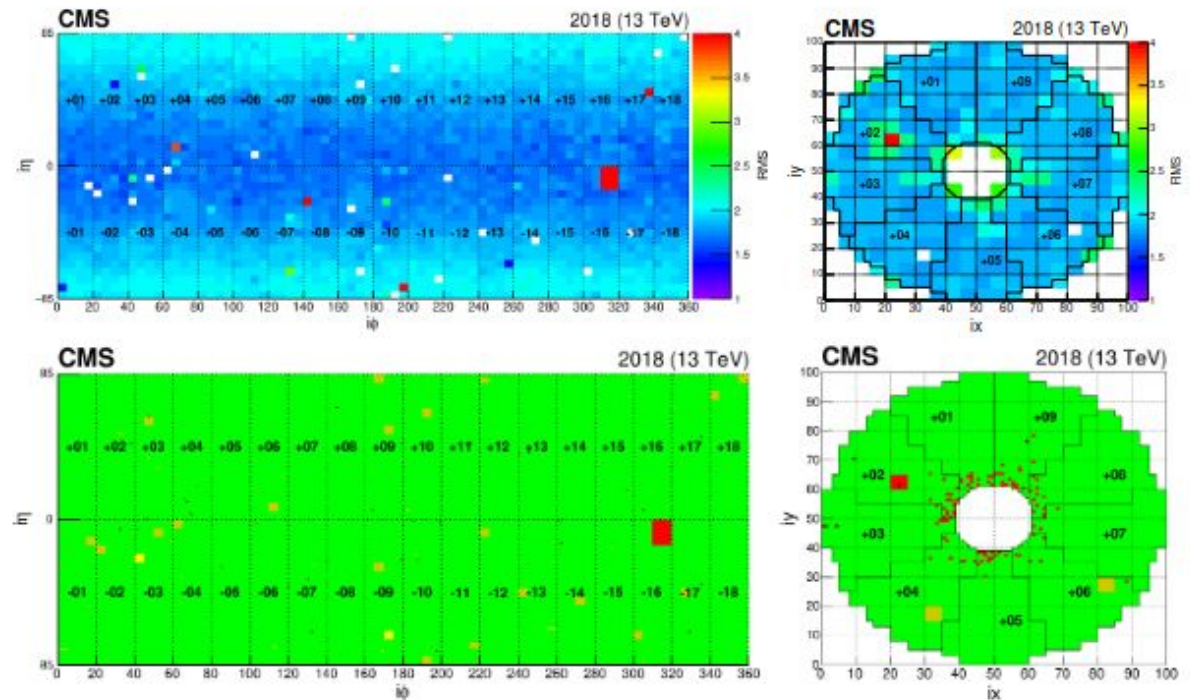
- combination of model-agnostic cut-based and model-dependent GNN approaches
- 95% CL exclusion limits of up to around $m_{\chi} < 1900$ GeV (depending on π_{dark} mass and lifetime)
- limit increase of around 500 GeV, most stringent limits to date



Anomaly Detection Based on Machine Learning for the CMS Electromagnetic Calorimeter Online Data Quality Monitoring

- Data Quality Monitoring (DQM) of the ECAL checks cut-based thresholds for quality flags

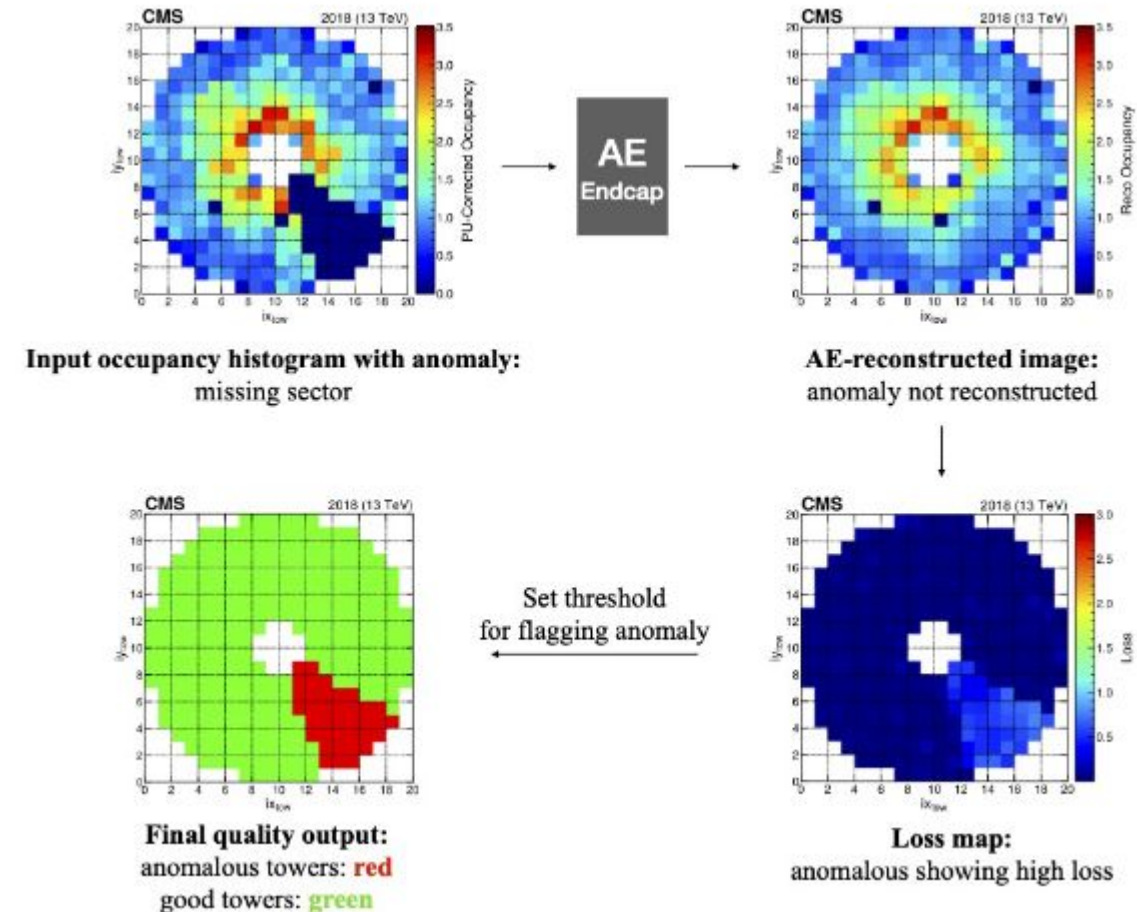
Occupancy histograms



Quality histograms

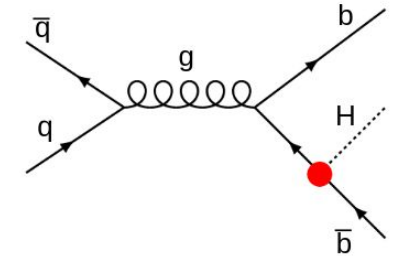
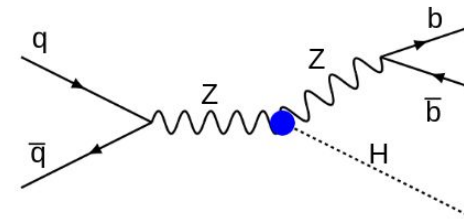
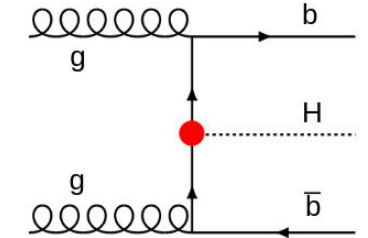
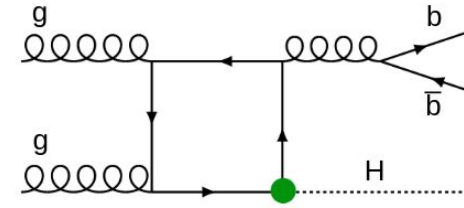
Anomaly Detection Based on Machine Learning for the CMS Electromagnetic Calorimeter Online Data Quality Monitoring

- semi-supervised anomaly detection in the form of an autoencoder (AE)
- trained on good-physics dataset from CMS Run 2
- AE reconstructs input data without anomaly
 - high loss in anomalous regions
- spatial and time corrections improve performance by factor of ~ 10
- the AE can spot errors that were previously missed by DQM



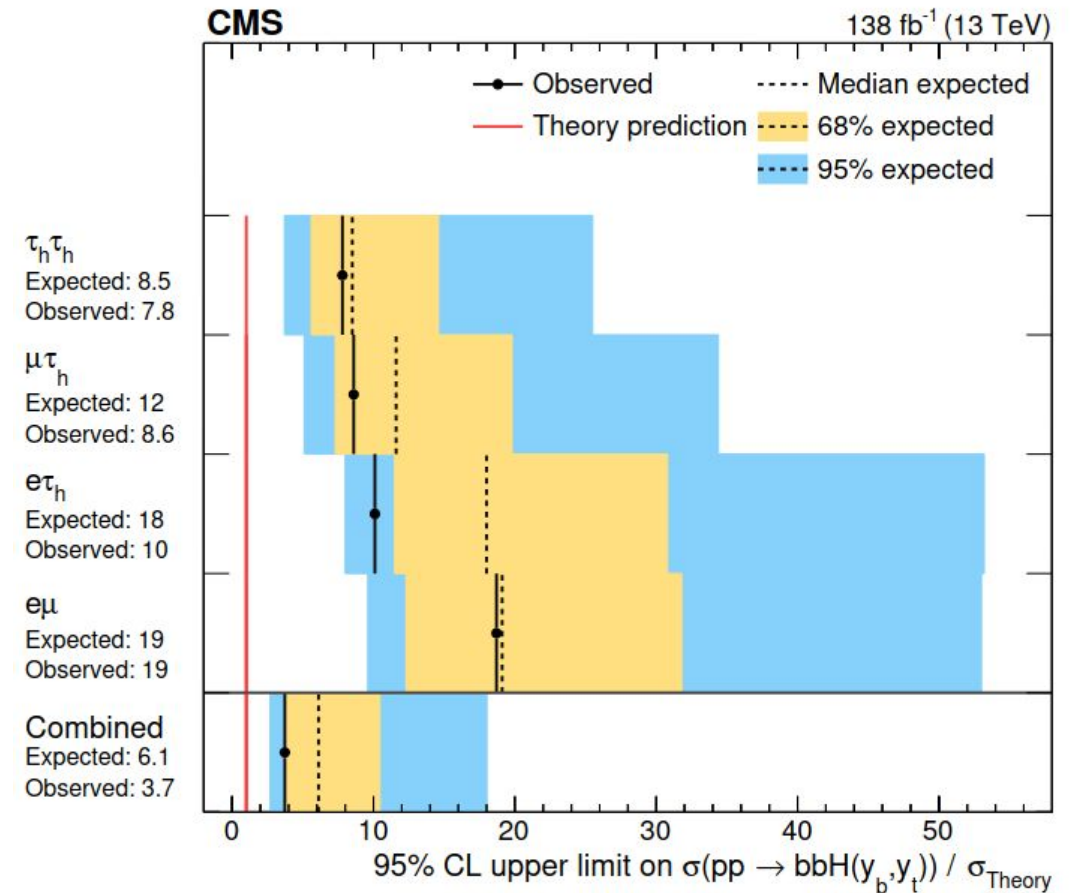
Search for bottom quark associated production of the standard model Higgs boson in final states with leptons in proton-proton collisions at $\sqrt{s} = 13$ TeV

- $b\bar{b}H$ production occurs almost as often as $t\bar{t}H$ production, but has not been observed
- less clear signature complicates background suppression (mainly $t\bar{t}$, V +jets)
- Higgs decay channels: 2 oppositely charged leptons with different flavor or hadronically decaying tau ($\tau_h\tau_h$, $e\tau_h$, $\mu\tau_h$, $e\mu$)



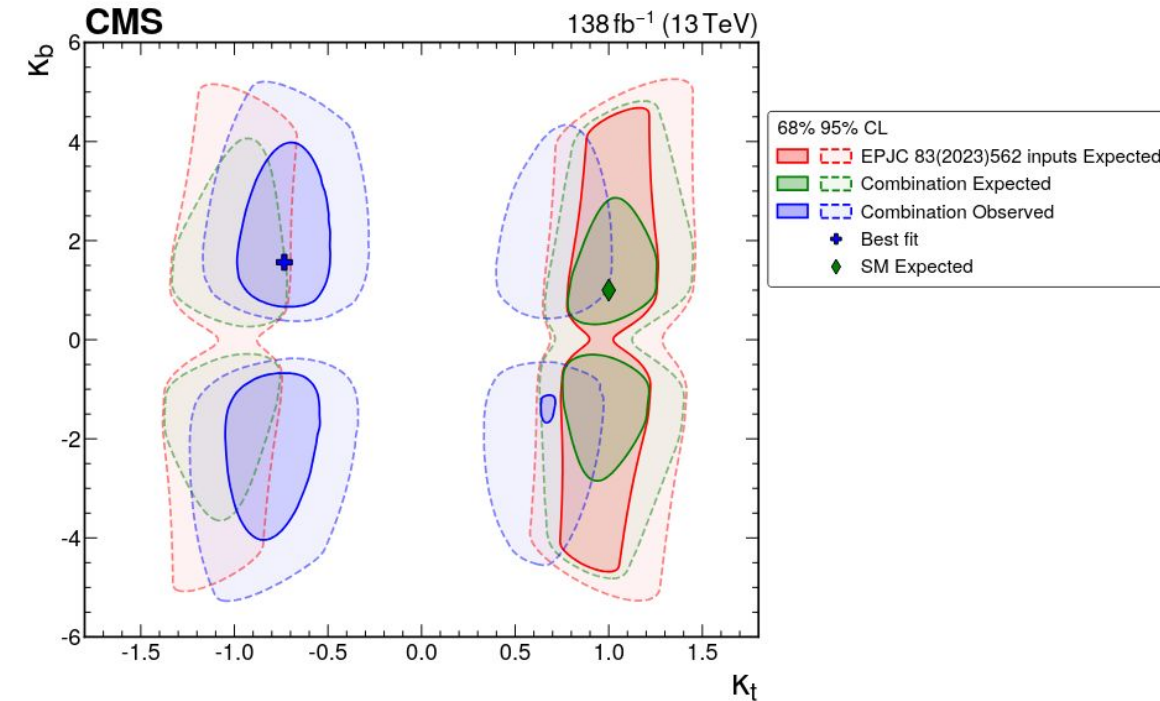
Search for bottom quark associated production of the standard model Higgs boson in final states with leptons in proton-proton collisions at $\sqrt{s} = 13$ TeV

- no significant excess above backgrounds at current precision
- observed (expected) upper limit at 95% CL on $b\bar{b}H$ production \times sec is 3.7 (6.1) times the SM prediction



Search for bottom quark associated production of the standard model Higgs boson in final states with leptons in proton-proton collisions at $\sqrt{s} = 13$ TeV

- search is also sensitive to Yukawa couplings
- best fit value for coupling modifiers $(\kappa_t, \kappa_b) = (-0.73, 1.58)$ compatible with SM at 95% CL
- improved constraints on the couplings (from red to green)



Other Interesting Papers

- from KIT (Torben Ferber, Felix Kahlhoefer, Alessandro Morandini, Kierthika Chathirathas):
 - [Reconstructing axion-like particles from beam dumps with simulation-based inference](#)
 - [Finding excesses in model parameter space](#)
- [Dark Matter Search Results from 1.54 Tonne · Year Exposure of PandaX-4T](#)